

CAUTG ENROLMENT REPORT 2009-2010

1. COLLECTION OF DATA: On April 14, 2010, the CAUTG Enrolment Questionnaire was posted on the web at <http://www.ucs.mun.ca/~marcella/CAUTG/2010/questionnaire2010.html> and a message was sent to the CAUTG listserv asking the designated individual in each department to fax the completed form to the Enrolment Surveyor by April 28. E-mails and faxes were sent to universities and colleges that had not responded by that date. All 44 universities replied, for a 100% response rate six years in a row! Information was also received from 4 colleges.

2. RESULTS AND COMPARISONS: Attached are 20 Tables reflecting the results of this year's survey (Table 4) and comparisons based on data from the history file.

New This Year:

1. A list of frequently asked questions is now available at <http://www.ucs.mun.ca/~marcella/CAUTG/2010/questionnaire2010.html> to help those who are filling out the questionnaire.

2. Table 2 has traditionally given enrolments for 25 universities that have reported every year since 1990. Last year Table 2 gave the enrolments of 36 universities that had reported every year for ten years. This year three more universities were added to the list: Bishop's, Carleton, and Saskatchewan.

Table 1: 10-Year Report of German Enrolments 2000-2010 for 44 Universities with Gains and Loss Comparison for 2008-2009 and 2009-2010. This is the comprehensive report for 44 universities, with data missing. The last six columns are totalled, since we have complete data for those six years. Enrolments for the last two years are compared. In 2009-2010, 22 universities show a combined gain of 1206 over the previous year, 21 universities show a combined loss of 752, and one stayed the same, for a **net gain of 454 enrolments**.

Table 2: German Enrolments for 39 Universities That Have Reported Every Year for 10 Years. Enrolments at these 39 universities are **up this year by 479 students**.

Table 3: Ranking of 2008-2009 German Enrolments for 40 Universities. This table represents the ranking for the previous year, 2008-2009, since the university enrolment figures for 2009-2010 are not yet available. German enrolments are ranked twice: 1) by actual size, and 2) by market share.

Table 4: 2009-2010 Enrolment Survey with 44 Universities Reporting. The total German enrolment for this year reported by 44 universities is 20,704. Table 4 shows the enrolment distribution spread over nine categories: 1 Language, 2 Reading, 3 Business German, 4 Culture/German Studies, 5 Culture/German Studies in Translation, 6 Literature, 7 Literature in Translation, 8 Linguistics and 9 Other. This year's survey results have been added to the database for the comparisons below.

Tables 5 - 10 show the enrolment distribution for Language, Reading, Culture/German Studies, Culture/German Studies in Translation, Literature, and Literature in Translation at 26 universities.

Table 5: Enrolment in Language Courses 2000-2010. There were 10,473 registrations in language courses, compared to 10,381 last year, **for an increase of 92 registrations. This figure has been revised since the May report. In particular, the first-year language registrations for Montreal have increased by 266 registrations.**

Tables 5a, 5b, 5c, & 5d show the distribution of enrolment in language courses. The previous labels Beginner, Intermediate 1, Intermediate 2, and Advanced were replaced in 2000-2001 for clarity with 1st year, 2nd year, 3rd year and 4th year. The tables now begin with that year. There were **increases in first, second and fourth year. This table has changed since the May report. In particular the registrations for first-year language have increased by 266 enrolments, showing now an increase rather than a decrease in first-year language.**

Table 6: Enrolment in Reading Courses. There were 574 registrations in reading courses, compared to 521 last year, **for an increase of 53 registrations.**

Table 7: Enrolment in Culture Studies Taught in German. There were 196 registrations in Culture Studies taught in German, compared to 181 last year, **for an increase of 15.**

Table 8: Enrolment in Culture Studies Taught in Translation. There were 2541 registrations in Culture Studies taught in Translation, compared to 2,634 last year, **for a decrease of 93.**

Table 9: Enrolment in Literature. There were 590 registrations in Literature this year, compared to 435 last year, **for an increase of 155.**

Table 10: Enrolment in Literature in Translation. There were 1154 registrations in Literature in Translation this year, compared to 1117 last year, **for an increase of 37.**

Table 11: Colleges. We received answers from 4 colleges. Okanagan's enrolment more than doubled at 186, and the other three have healthy enrolments.

Table 12: Graduate Enrolments and Degrees Awarded. 12 universities reported graduate enrolments this year. In 2009-2010 there were 60 M.A. students and 63 Ph.D. students, for a total of 123 graduate students, compared to 141 the previous year. The M.A.s decreased by 11 and the Ph.D.s decreased by 7, **for an overall decrease in graduate enrolments of 18.** 31 M.A.s and 6 Ph.D.s were awarded, compared to 27 and 5 last year, **for an increase in graduate degrees awarded of 5.**

Table 13: Film Courses. In 2009-2010 film courses were offered at 16 universities, with a total enrolment of 968, compared to 2008-2009, when film courses were offered at 15 universities with a total enrolment of 1069, **for a decrease in film course enrolments of 101.**

Table 14: Average Class Size - 1st-year Language Fall 09 and 1st-year Language Fall / Winter 09-10 for 37 Universities. The average class size for fall enrolments was 28 and for fall / winter was 27. The class enrolments in first-year language for fall / winter ranged from 8 to 69, with a median of 25 and a mean of 27. Wilfrid Laurier has a cap of 75 for all first-year

courses. They augment the large classes with one hour weekly oral practice tutorials capped at 20 or 25 students.

Table 15: Undergraduate Program Enrolments for 26 Universities. This table includes majors, minors, and honours. It needs to be updated to include modern language concentrations, specialists, and certificates, as well as the number of courses required for each.

Table 16: Comparison of Enrolments in Reading, Culture Taught in German (Kultur), Culture Taught in Translation (Culture), Literature Taught in German (Literatur), and Literature Taught in Translation (Literature) Courses from 1992-2010. This table presents the totals from all five categories for 18 years, with graphic depiction.

Table 17: Comparison of Enrolments in Language, Reading, Culture Taught in German (Kultur), Culture Taught in Translation (Culture), Literature Taught in German (Literatur), and Literature Taught in Translation (Literature) Courses in 2009-2010. This table compares the totals of the six categories for this year, with graphic depiction.

Table 18: Normal Annual Full Teaching Load for Tenured /Tenure Stream Faculty for 29 Universities. Nine universities reported 4 courses, one reported 4.5, sixteen reported 5, and three reported 6 courses as the normal full load, for **an average normal full load of 4.8**. Since last year 3 universities have reduced their teaching load. One changed from 6 to 4, one changed from 6 to 5, and one changed from 5 to 4.

Table 19. Faculty Complement and Number of Courses Taught by Tenured / Tenure Stream, Full-time Contractuals and Other Full-time Appointments, and Per Course Instructors (Sessionals), PADs, Graduate Students or Other Part-timers at 34 Universities. 63.5% of the courses were taught by full-time faculty including tenured / tenure stream, full-time contractuals and other full-time appointments, with 37.1% of the courses being taught by tenured/tenure stream. 36.5% were taught by part-timers.

Table 20. Enrolment Cap per Section for First-Year German Language Courses at 32 Universities. The range was 20-120, with a median of 32.5 and a mean of 36.

3. SUMMARY and DISCUSSION. Of 44 universities reporting in both 2008-2009 and 2009-2010, 22 universities show a combined gain of 1206 over the previous year, 21 show a combined loss of 752, and one remained the same, **for a net gain of 454 enrolments (Table 1)**. There are gains in first, second and fourth year language, reading, culture studies taught in German, literature courses taught in German, literature taught in translation, and M.A.s and Ph.D.s awarded.

UBC had the largest increase this year (312) and their largest enrolment ever (2809). This includes their highest ever first-year language enrolment (778), a large reading enrolment (348) and their largest ever enrolment in Literature in translation (649). They also have a healthy enrolment in Scandinavian courses (387). Memorial had the second largest increase this year (137) and Victoria the third (102).

Wilfrid Laurier posts an increase of 21 under extraordinary circumstances. They had their courses reduced from 12 to 7, which would normally result in decreased enrolment. They also had their cap raised from 45 to 75 for all first-year courses. How did they manage an

increase under these circumstances? Alexandra Zimmermann explains that in addition to their courses they do a lot of extra-curricular activities, such as German Immersion Weekend, Fasching, theatre performances, and have an active German Culture Society. She offers the following suggestions for teaching large classes:

Pedagogically I would recommend the following in the large class environment:

- good and clear power point presentations for grammar
- a well designed course WEB-site, with the possibility of posting course materials (like power points, word files, links, etc. for review), messages, discussions boards (for students) and calendars with test days
- transparent and detailed course outline with a content description of each class and very clear and simple class rules
- multi-channeled teaching
- despite the high number of students: not giving up the benefits of interactive teaching:
- relative short periods, if it is instructor induced practice, longer periods with partner or group practice
- performing mini-skits in front of the class
- incorporating humorous and entertaining elements
- well thought out methodological approach for each class (good preparation), frequent change of phases
- strong audiovisual components (Quia and Tell me more) for self study
- 1 hour weekly of oral practice tutorials (we used to teach them ourselves, now, as we cost too much, they will be taught by 4th year students)
- the tutorials are presently capped at 20 or 25 students

The largest decline was at York, which suffered loss of one large cross-listed course due to administrative error and a film course due to budget cuts.

Reasons given for declines at other universities included retirements, reduced faculty, cuts to courses, elimination of language requirement, and loss of programs. Six departments reported loss of the major during the last decade.

Reasons given for increases included institution of a certificate program (Simon Fraser), institution of a minor (Lethbridge), exchange programs allowing for offering of more courses (Alberta), opening of second-year courses (Athabasca), and offering of new culture and literature courses in translation.

This report differs from the report that was presented at the ABM in May in that it reflects corrections and updates received through July 22, 2010, as follows: 1) Montreal's numbers for first-year language have increased by 266, resulting in revisions to total enrolment (Tables 1, 2, and 4), total language enrolment (Table 5 and 17), and first-year language enrolment (Table 5 and 5a); 2) two more colleges have reported (Table 11). Please check your own institution's figures for accuracy. Some information provided by departments has been omitted here because of obvious errors or incompleteness and awaits further clarification. Please continue to send in corrections, explanations, and additional data, such as degrees awarded, that you did not have earlier.

This report reflects data received by July 22, 2010.

Respectfully submitted,
Marcella Rollmann
CAUTG Enrolment Surveyor

Table 1

**10-Year Report of German Enrolments for 44 Universities with Gain and Loss
Comparison for 2008-2009 and 2009-2010**

University	00-01	01-02	02-03	03-04	04-05	05-06	06-07	07-08	08-09	09-10	Gain/ Loss
	1 Acadia	368	359	438	482	467	425	399	292	286	312
2 Alberta	738	741	803	790	816	785	838	826	941	914	-27
3 Athabasca	160	n.d.	97	116	99	110	125	100	114	144	30
4 Augustana	176	165	165	121	116	304	244	205	121	136	15
5 Bishop's	187	216	198	147	221	158	140	95	109	141	32
6 Brandon	30	30	27	40	40	21	0	35	0	25	25
7 UBC	1880	1454	1926	2239	1981	2415	2420	2527	2497	2809	312
8 Brock	225	189	173	173	238	249	260	225	203	201	-2
9 Calgary	520	423	474	551	490	552	590	527	596	677	81
10 Carleton	232	208	304	319	248	286	278	289	319	287	-32
11 Concordia	443	433	558	581	524	426	437	393	491	465	-26
12 Dalhousie	897	935	1089	1226	871	809	878	736	865	817	-48
13 Guelph	247	286	311	373	331	314	281	286	340	395	55
14 Lakehead	64	60	28	28	28	32	48	34	28	34	6
15 Laurentian	58	58	122	65	68	97	72	90	49	0	-49
16 Laval	362	509	579	768	803	774	584	582	615	655	40
17 Lethbridge	111	86	84	99	107	111	103	111	108	116	8
18 Manitoba	168	470	484	562	490	513	433	404	390	393	3
19 McGill	912	972	993	819	947	741	817	793	849	920	71
20 McMaster	336	403	337	506	350	277	252	282	326	268	-58
21 Memorial	836	829	814	706	762	785	741	564	549	686	137
22 Montreal	1016	1120	1160	1134	1286	1096	1106	860	907	997	90
23 Mt.Allison	222	300	255	237	200	223	165	172	165	208	43
24 Mt.St.Vin.	n.d.	42	34	36	26	23	21	21	14	0	-14
25 UNB	336	391	360	487	430	309	291	317	250	262	12
26 Ottawa	242	312	333	419	463	542	518	572	579	579	0
27 PEI	n.d.	n.d.	n.d.	100	106	86	74	39	61	41	-20
28 UQAM	452	525	625	662	787	607	607	586	621	556	-65
29 Queen's	602	538	655	723	721	691	605	548	535	519	-16
30 Regina	432	429	375	317	296	280	254	253	228	216	-12
31 St. F.X.	n.d.	n.d.	n.d.	n.d.	78	96	114	107	104	96	-8
32 St.Mary's	231	206	189	271	294	228	226	163	145	128	-17
33 Sask.	172	206	216	229	206	191	229	201	205	193	-12
34 Simon Fr.	132	274	605	555	380	405	305	307	274	300	26
35 Toronto & UTM	1404	1088	1155	1254	1264	1338	1389	1295	1168	1074	-94
36 Trent	298	245	245	298	230	416	314	290	314	334	20
37 Trinity W.	n.d.	n.d.	n.d.	n.d.	46	34	40	29	30	17	-13
38 Victoria	912	1048	990	1084	1202	963	959	839	978	1080	102
39 Waterloo	811	935	777	745	1029	1051	1285	1137	1472	1463	-9
40 W.Ontario	387	342	412	347	324	373	368	361	401	357	-44
41 W.Laurier	233	277	370	449	360	304	350	330	283	304	21
42 Windsor	367	367	402	445	386	458	551	517	819	870	51
43 Winnipeg	98	126	166	204	200	184	200	175	118	109	-9
44 York	506	538	513	551	544	671	698	669	783	606	-177
Total:	20855	20753	20609	19184	20250	20704	454				

In 2009-2010, 22 universities show a combined gain of 1206 over the previous year while 21 show a combined loss of 752, and one stayed the same for a **net gain of 454 enrolments**.

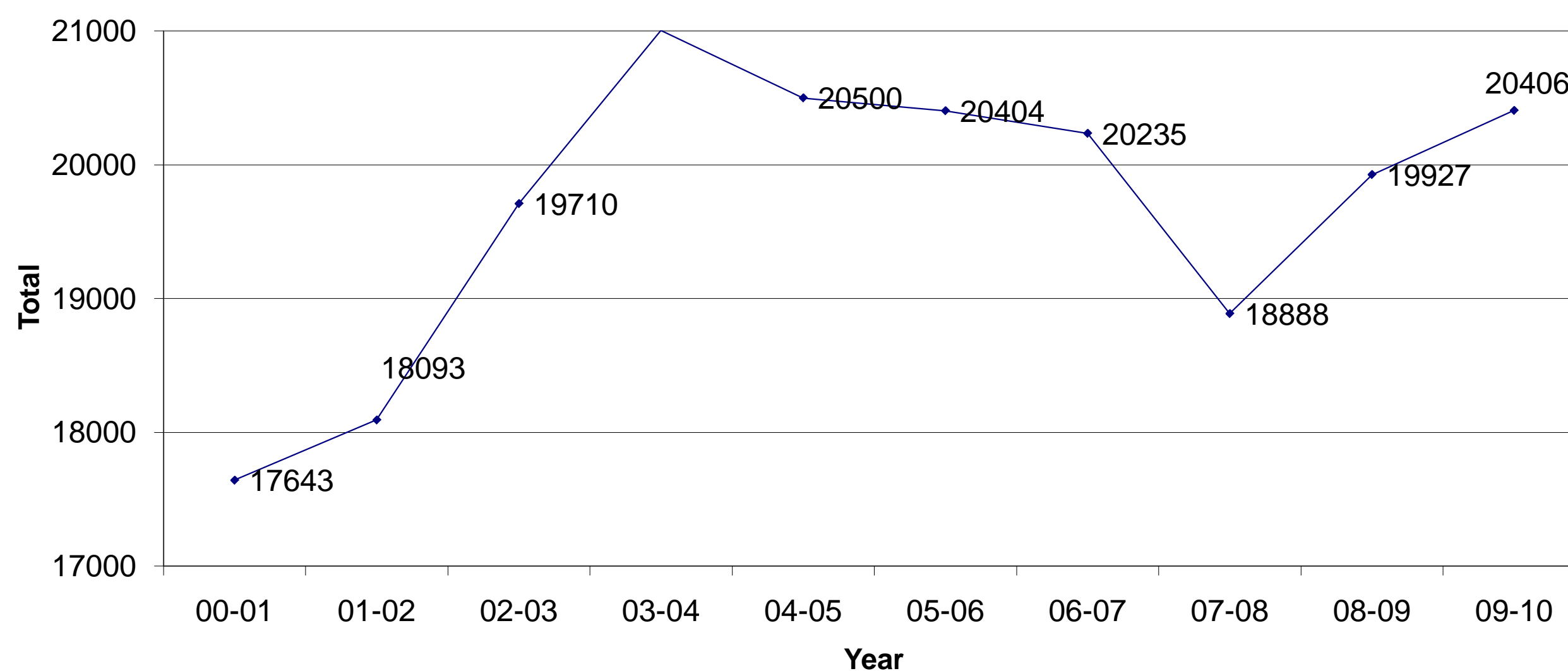
Toronto's numbers from 1999-2008 have been revised. See 2008-2009 report for details.

Table 2

German Enrolments for 39 Universities That Have Reported Every Year for 10 Years

University	00-01	01-02	02-03	03-04	04-05	05-06	06-07	07-08	08-09	09-10
1 Acadia	368	359	438	482	467	425	399	292	286	312
2 Alberta	738	741	803	790	816	785	838	826	941	914
3 Augustana	176	165	165	121	116	304	244	205	121	136
4 Bishop's	187	216	198	147	221	158	140	95	109	141
5 Brandon	30	30	27	40	40	21	0	35	0	25
6 UBC	1880	1454	1926	2239	1981	2415	2420	2527	2497	2809
7 Brock	225	189	173	173	238	249	260	225	203	201
8 Calgary	520	423	474	551	490	552	590	527	596	677
9 Carleton	232	208	304	319	248	286	278	289	319	287
10 Concordia	443	433	558	581	524	426	437	393	491	465
11 Dalhousie	897	935	1089	1226	871	809	878	736	865	817
12 Guelph	247	286	311	373	331	314	281	286	340	395
13 Lakehead	64	60	28	28	28	32	48	34	28	34
14 Laurentian	58	58	122	65	68	97	72	90	49	0
15 Laval	362	509	579	768	803	774	584	582	615	655
16 Lethbridge	111	86	84	99	107	111	103	111	108	116
17 Manitoba	168	470	484	562	490	513	433	404	390	393
18 McGill	912	972	993	819	947	741	817	793	849	920
19 McMaster	336	403	337	506	350	277	252	282	326	268
20 Memorial	836	829	814	706	762	785	741	564	549	686
21 Montreal	1016	1120	1160	1134	1286	1096	1106	860	907	997
22 Mt.Allison	222	300	255	237	200	223	165	172	165	208
23 UNB	336	391	360	487	430	309	291	317	250	262
24 Ottawa	242	312	333	419	463	542	518	572	579	579
25 UQAM	452	525	625	662	787	607	607	586	621	556
26 Queen's	602	538	655	723	721	691	605	548	535	519
27 Regina	432	429	375	317	296	280	254	253	228	216
28 St.Mary's	231	206	189	271	294	228	226	163	145	128
29 Sask.	172	206	216	229	206	191	229	201	205	193
30 Simon Fr.	132	274	605	555	380	405	305	307	274	300
31 Toronto & UTM	1404	1088	1155	1254	1264	1338	1389	1295	1168	1074
32 Trent	298	245	245	298	230	416	314	290	314	334
33 Victoria	912	1048	990	1084	1202	963	959	839	978	1080
34 Waterloo	811	935	777	745	1029	1051	1285	1137	1472	1463
35 W.Ontario	387	342	412	347	324	373	368	361	401	357
36 W.Laurier	233	277	370	449	360	304	350	330	283	304
37 Windsor	367	367	402	445	386	458	551	517	819	870
38 Winnipeg	98	126	166	204	200	184	200	175	118	109
39 York	506	538	513	551	544	671	698	669	783	606
Total	17643	18093	19710	21006	20500	20404	20235	18888	19927	20406

2. German Enrolments 2000-2010



Toronto's numbers from 1999-2008 have been revised. See 2008-2009 report for details.

Bishop's, Carleton, and Saskatchewan have been added to this Table.

Table 3

Ranking of 2008-2009 German Enrolments for 40 Universities

Alphabetical Listing			Ranking by German Course Registrations		Ranking by Market Share			
University	German Enr. 08-09	University Enr. 08-09	University	German Enr. 08-09				
1	Acadia	286	1	UBC	2497	1	Acadia	10.12
2	Alberta	941	2	Waterloo	1472	2	UBC	9.02
3	Bishop's	109	3	Toronto & UTM	1168	3	Victoria	8.60
4	UBC	2497	4	Victoria	978	4	Dalhousie	8.46
5	Brock	203	5	Alberta	941	5	Mount Allison	7.72
6	Calgary	596	6	Montréal	907	6	Windsor	7.13
7	Carleton	319	7	Dalhousie	865	7	Waterloo	6.36
8	Concordia	491	8	McGill	849	8	Bishop's	6.29
9	Dalhousie	865	9	Windsor	819	9	Trent	5.23
10	Guelph	340	10	York	783	10	Memorial	4.47
11	Lakehead	28	11	UQAM	621	11	McGill	4.21
12	Laurentian	49	12	Laval	615	12	Queen's	3.62
13	Laval	615	13	Calgary	596	13	UQAM	3.40
14	Lethbridge	108	14	Ottawa	579	14	Alberta	3.35
15	Manitoba	390	15	Memorial	549	15	Montréal	3.23
16	McGill	849	16	Queen's	535	16	Laval	3.09
17	McMaster	326	17	Concordia	491	17	UNB	3.04
18	Memorial	549	18	W. Ontario	401	18	Calgary	2.94
19	Montréal	907	19	Manitoba	390	19	Regina	2.93
20	Mount Allison	165	20	Guelph	340	20	Concordia	2.89
21	Mount St. Vincent	14	21	McMaster	326	21	Saint Mary's	2.47
22	UNB	250	22	Carleton	319	22	Saint F. Xavier	2.46
23	Ottawa	579	23	Trent	314	23	Simon Fraser	2.33
24	P.E.I.	61	24	Acadia	286	24	Wilfrid Laurier	2.31
25	UQAM	621	25	Wilfrid Laurier	283	25	Ottawa	2.26
26	Queen's	535	26	Simon Fraser	274	26	Toronto & UTM	2.17
27	Regina	228	27	UNB	250	27	Guelph	2.15
28	Saint F. Xavier	104	28	Regina	228	28	Manitoba	2.13
29	Saint Mary's	145	29	Saskatchewan	205	29	Winnipeg	2.05
30	Saskatchewan	205	30	Brock	203	30	York	2.01
31	Simon Fraser	274	31	Mount Allison	165	31	Carleton	1.95
32	Toronto & UTM	1168	32	Saint Mary's	145	32	P.E.I.	1.85
33	Trent	314	33	Winnipeg	118	33	McMaster	1.67
34	Victoria	978	34	Bishop's	109	34	Saskatchewan	1.63
35	Waterloo	1472	35	Lethbridge	108	35	Lethbridge	1.61
36	W. Ontario	401	36	Saint F. Xavier	104	36	Brock	1.57
37	Wilfrid Laurier	283	37	P.E.I.	61	37	W. Ontario	1.54
38	Windsor	819	38	Laurentian	49	38	Laurentian	0.86
39	Winnipeg	118	39	Lakehead	28	39	Mount St. Vincent	0.69
40	York	783	40	Mount St. Vincent	14	40	Lakehead	0.48

Table 3 represents the ranking for 2008-2009, since enrolment figures for this year are not yet available. The university figures for full-time undergraduate enrolment for 2008-2009 are taken from Maclean's 2010 Guide to Canadian Universities (p. 68-166), which uses 2008-2009 enrolment figures. Note that market share is calculated by dividing total German course registrations for the year by full-time undergraduate university enrolment x 100, since total university course registrations are not available.

CAUTG Enrolment Survey May 2010

Table 4

2009-2010 Enrolment Survey with 44 Universities Reporting

Column Key

- | | | |
|--------------------|--|------------------------------|
| 1. Language | 4. Culture Studies Taught in German | 7. Literature in Translation |
| 2. Reading | 5. Culture Studies Taught in Translation | 8. Linguistics |
| 3. Business German | 6. Literature | 9. Other* |

University	1	2	3	4	5	6	7	8	9	Total
1 Acadia	297	0	0	0	11	4	0	0	0	312
2 Alberta	503	48	40	32	10	41	0	51	189	914
3 Athabasca	132	12	0	0	0	0	0	0	0	144
4 Augustana	123	0	0	0	0	13	0	0	0	136
5 Bishop's	95	0	0	22	0	0	0	0	24	141
6 Brandon	25	0	0	0	0	0	0	0	0	25
7 UBC	1153	348	35	0	158	77	649	0	389	2809
8 Brock	174	0	0	0	27	0	0	0	0	201
9 Calgary	457	0	0	21	94	16	37	0	52	677
10 Carleton	287	0	0	0	0	0	0	0	0	287
11 Concordia	399	8	0	0	0	35	23	0	0	465
12 Dalhousie	475	0	0	0	260	72	10	0	0	817
13 Guelph	295	0	7	7	23	24	39	0	0	395
14 Lakehead	34	0	0	0	0	0	0	0	0	34
15 Laurentian	0	0	0	0	0	0	0	0	0	0
16 Laval	577	17	0	0	0	0	0	0	61	655
17 Lethbridge	116	0	0	0	0	0	0	0	0	116
18 Manitoba	325	0	0	0	17	17	12	14	8	393
19 McGill	684	0	0	0	66	88	82	0	0	920
20 McMaster	228	0	0	11	22	0	0	0	7	268
21 Memorial	504	1	0	0	171	9	1	0	0	686
22 Montreal	750	71	0	40	28	55	21	0	32	997
23 Mount Allison	152	0	0	0	29	27	0	0	0	208
24 Mt. St. Vincent	0	0	0	0	0	0	0	0	0	0
25 UNB	223	0	0	0	19	0	20	0	0	262
26 Ottawa	464	0	0	0	83	12	20	0	0	579
27 PEI	41	0	0	0	0	0	0	0	0	41
28 UQAM	428	25	0	0	26	0	0	0	77	556
29 Queen's	307	67	0	15	77	27	26	0	0	519
30 Regina	187	0	0	4	18	7	0	0	0	216
31 Saint F. Xavier	96	0	0	0	0	0	0	0	0	96
32 Saint Mary's	113	0	0	0	15	0	0	0	0	128
33 Saskatchewan	155	0	0	33	0	5	0	0	0	193
34 Simon Fraser	300	0	0	0	0	0	0	0	0	300
35A Toronto	639	0	35	16	67	85	12	0	6	860
35B UTM	170	0	0	6	36	0	0	0	2	214
36 Trent	263	0	0	0	18	53	0	0	0	334
37 Trinity Western	17	0	0	0	0	0	0	0	0	17
38 Victoria	460	20	0	13	446	0	141	0	0	1080
39 Waterloo	700	0	0	0	361	18	0	51	333	1463
40 W. Ontario	325	0	0	0	0	22	0	0	10	357
41 Wilfrid Laurier	288	0	0	16	0	0	0	0	0	304
42 Windsor	182	2	0	0	373	0	94	219	0	870
43 Winnipeg	99	0	0	0	0	3	0	0	7	109
44 York	404	0	0	15	158	10	2	0	17	606
Total	13646	619	117	251	2613	720	1189	335	1214	20704

The total enrolment for German this year reported by 44 universities is 20,704.

*Courses included under column 9 (other) are Scandinavian languages and literature, Dutch, research methods, independent research, literary theory, translation, film courses (but most film courses are listed under Culture in Translation), and phonetics.

CAUTG Enrolment Survey May 2010

Table 5
Enrolment in Language Courses

The following 26 universities will be used for tables 5 through 10:

Alberta, Brandon, UBC, Brock, Calgary, Dalhousie, Guelph, Lakehead, Laval, McGill, McMaster, Memorial, Montreal, Mount Allison, UNB, Ottawa, Queen's, Regina, Saint Mary's, Toronto & UTM, Victoria, Waterloo, W. Ontario, Wilfrid Laurier, Windsor, York.

	00-01	01-02	02-03	03-04	04-05	05-06	06-07	07-08	08-09	09-10
1st year	6699	7151	7515	7916	7820	7384	7570	7115	7376	7505
2nd year	1957	1752	1952	2106	2141	1887	1918	1814	1825	1837
3rd year	940	903	868	984	928	1071	966	823	987	919
4th year	345	211	261	386	255	186	194	168	193	212
Total	9941	10017	10596	11392	11144	10528	10648	9920	10381	10473

5. Total Enrolment in Language Courses

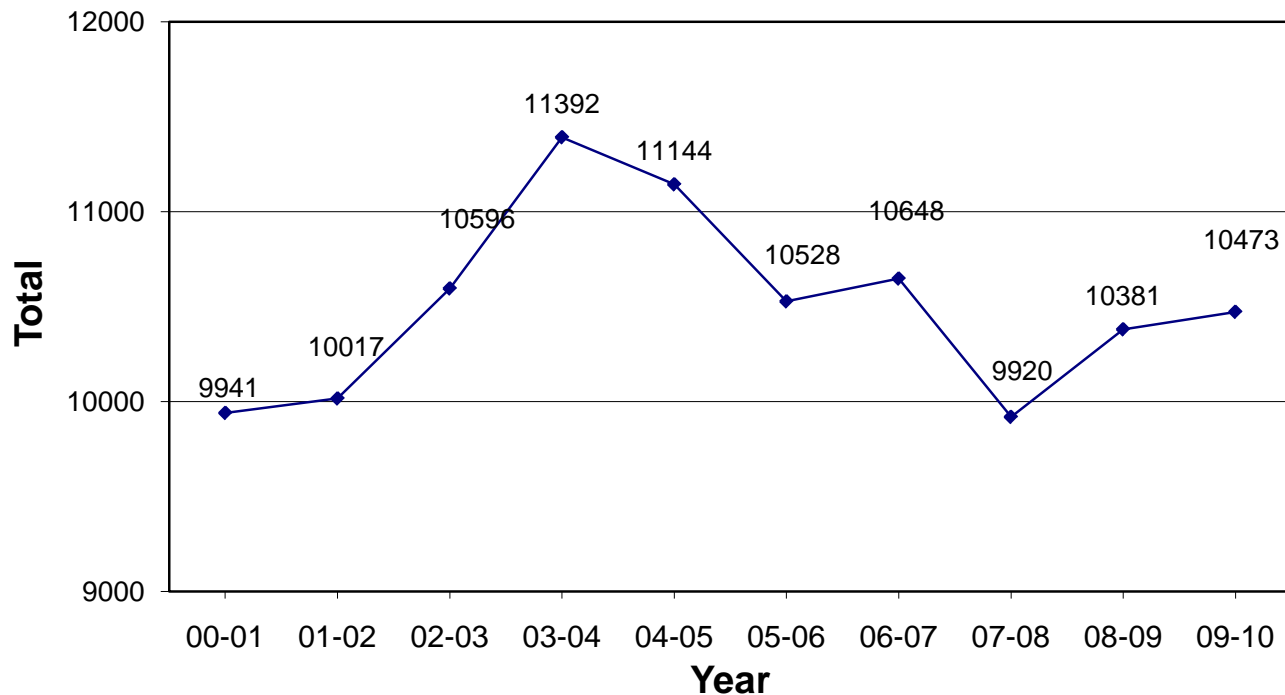
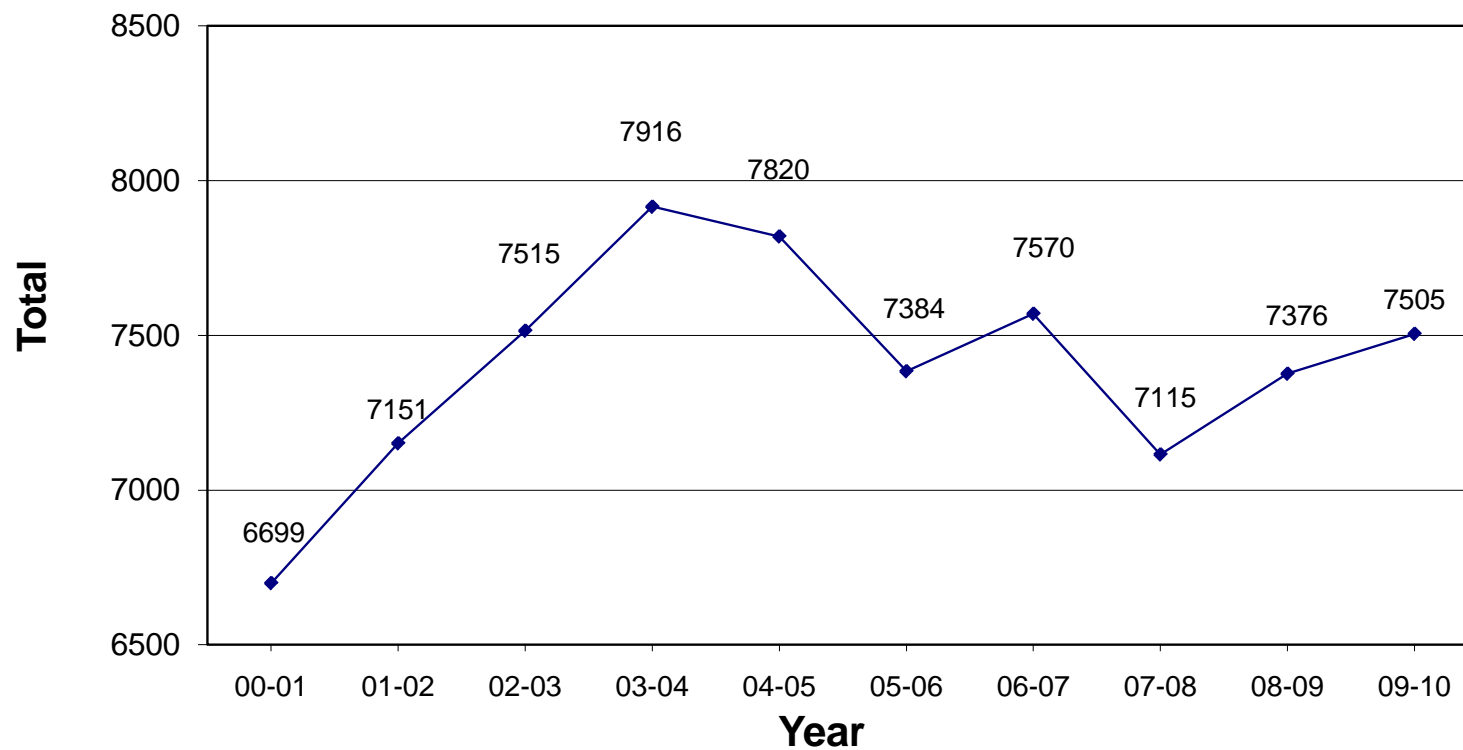


Table 5a

Enrolment in Language Courses (1st Year)

University	00-01	01-02	02-03	03-04	04-05	05-06	06-07	07-08	08-09	09-10
1 Alberta	298	328	346	338	317	320	317	304	326	325
2 Brandon	24	22	20	36	25	21	0	35	0	25
3 UBC	522	669	739	600	663	552	689	638	689	778
4 Brock	154	82	84	64	182	191	205	177	146	158
5 Calgary	169	51	52	226	182	197	245	225	269	327
6 Dalhousie	374	291	284	308	243	208	214	250	266	288
7 Guelph	155	169	184	235	195	198	186	185	190	247
8 Lakehead	28	34	28	28	28	32	48	34	28	34
9 Laval	189	262	372	462	552	470	408	394	439	356
10 McGill	332	442	418	372	357	345	347	356	364	399
11 McMaster	201	215	196	363	226	139	142	142	202	118
12 Memorial	595	575	555	468	479	519	459	328	332	414
13 Montreal	619	837	841	824	883	731	904	646	698	729
14 Mt.Allison	88	123	103	117	93	99	85	109	87	114
15 UNB	174	246	265	318	248	195	207	204	195	202
16 Ottawa	154	201	195	263	246	293	256	322	314	329
17 Queen's	314	269	332	347	334	313	294	261	270	228
18 Regina	330	316	314	232	226	216	168	184	158	132
19 St.Mary's	174	160	139	183	179	133	116	112	80	89
20 Toronto & UTM	421	374	438	585	481	511	533	526	564	503
21 Victoria	365	441	407	410	352	315	322	296	287	329
22 Waterloo	262	337	358	352	532	539	560	502	542	549
23 W. Ontario	298	226	296	166	194	230	226	240	300	232
24 Wilfrid L.	118	118	167	225	208	199	216	236	190	206
25 Windsor	158	176	173	170	163	166	133	149	108	110
26 York	183	187	209	224	232	252	290	260	332	284
Total	6699	7151	7515	7916	7820	7384	7570	7115	7376	7505

5a. Total Enrolment in Language Courses (1st Year)



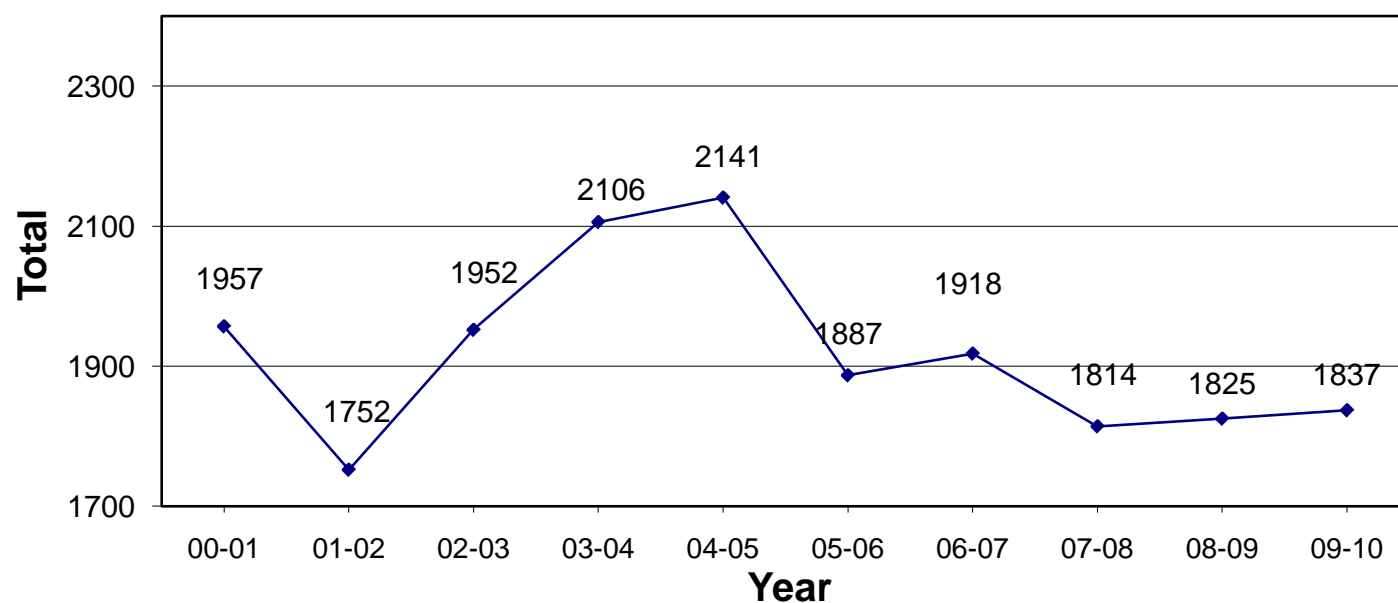
CAUTG Enrolment Survey May 2010

Table 5b

Enrolment in Language Courses (2nd Year)

University	00-01	01-02	02-03	03-04	04-05	05-06	06-07	07-08	08-09	09-10
1 Alberta	126	100	122	108	142	137	150	131	151	102
2 Brandon	6	8	7	4	15	0	0	0	0	0
3 UBC	152	206	241	201	202	226	207	231	193	221
4 Brock	18	5	16	14	20	14	13	13	11	8
5 Calgary	68	73	83	87	56	64	74	65	41	21
6 Dalhousie	64	64	102	124	123	86	92	84	114	125
7 Guelph	36	38	41	45	39	45	23	33	33	39
8 Lakehead	0	0	0	0	0	0	0	0	0	0
9 Laval	75	77	82	115	83	100	68	70	59	118
10 McGill	211	172	160	159	151	128	147	134	137	165
11 McMaster	38	49	43	50	46	47	27	35	47	67
12 Memorial	66	76	74	72	70	85	74	55	45	46
13 Montreal	192	21	78	49	70	49	10	12	24	21
14 Mt.Allison	30	31	44	49	51	34	18	22	32	30
15 UNB	20	27	25	20	32	28	19	17	14	10
16 Ottawa	24	50	43	38	64	54	100	102	93	86
17 Queen's	79	77	81	103	65	67	65	63	54	63
18 Regina	57	64	29	37	28	27	34	18	31	42
19 St.Mary's	26	28	20	29	38	27	34	28	24	16
20 Toronto & UTM	219	202	194	240	268	192	200	268	194	192
21 Victoria	142	123	141	142	135	85	88	64	79	78
22 Waterloo	121	79	72	104	151	147	171	133	136	128
23 W. Ontario	27	23	27	78	84	94	90	70	64	86
24 Wilfrid L.	68	38	99	109	75	55	56	49	57	63
25 Windsor	40	35	34	37	61	34	72	21	70	34
26 York	52	86	94	92	72	62	86	96	122	76
Total	1957	1752	1952	2106	2141	1887	1918	1814	1825	1837

5b. Total Enrolment in Language Courses (2nd Year)



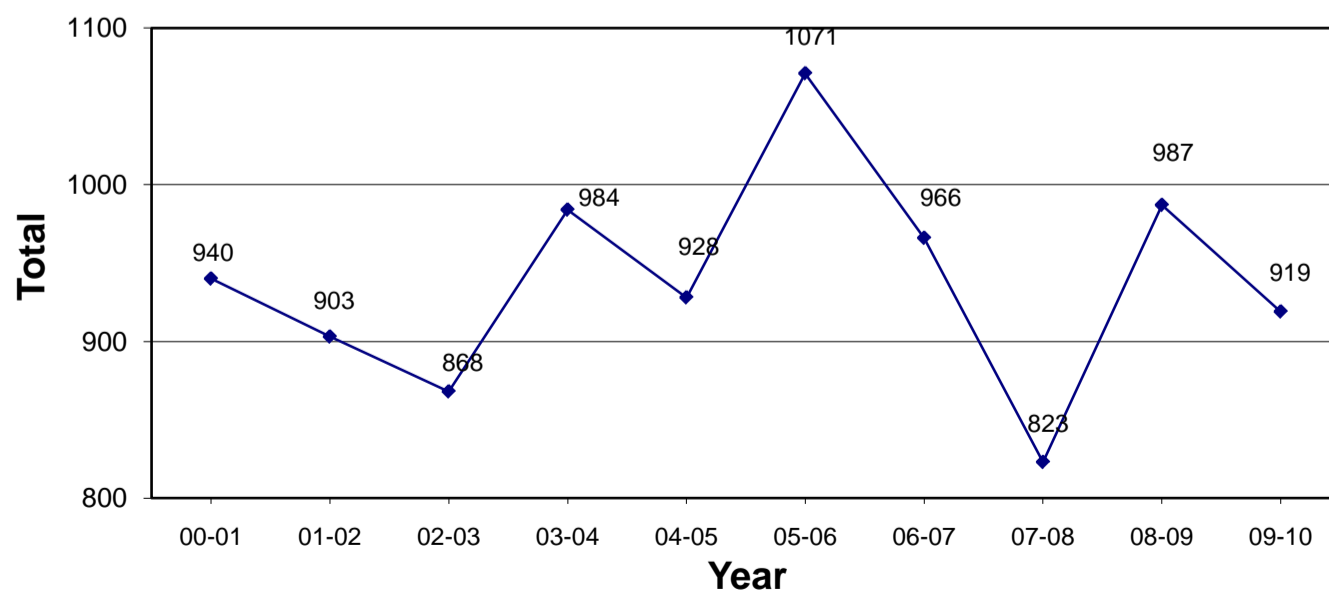
CAUTG Enrolment Survey May 2010

Table 5c

Enrolment in Language Courses (3rd Year)

University	00-01	01-02	02-03	03-04	04-05	05-06	06-07	07-08	08-09	09-10
1 Alberta	42	58	72	67	71	74	76	87	83	76
2 Brandon	0	0	0	0	0	0	0	0	0	0
3 UBC	95	91	129	86	85	122	119	79	105	109
4 Brock	0	14	0	8	4	15	8	6	12	8
5 Calgary	43	24	32	42	41	41	37	26	75	81
6 Dalhousie	17	38	36	30	64	53	69	40	52	62
7 Guelph	4	8	12	11	15	6	10	12	8	9
8 Lakehead	0	0	0	0	0	0	0	0	0	0
9 Laval	66	69	47	81	60	100	53	53	50	52
10 McGill	106	86	108	87	86	89	73	68	104	120
11 McMaster	32	34	27	29	21	41	29	0	30	28
12 Memorial	48	59	53	70	60	62	61	58	32	44
13 Montreal	0	0	0	0	0	0	0	0	0	0
14 Mt.Allison	30	20	20	21	34	18	29	6	9	8
15 UNB	17	7	9	13	13	16	5	13	16	7
16 Ottawa	17	25	26	26	25	48	40	58	51	49
17 Queen's	13	0	0	0	0	0	0	0	0	0
18 Regina	15	9	11	17	12	16	15	12	8	10
19 St.Mary's	0	18	0	27	10	34	23	0	20	0
20 Toronto & UTM	99	102	92	117	110	154	104	114	136	99
21 Victoria	88	87	68	91	84	41	54	49	64	43
22 Waterloo	120	65	33	7	22	44	60	47	47	23
23 W. Ontario	16	20	14	19	17	7	16	15	10	7
24 Wilfrid L.	10	18	35	49	27	26	28	34	13	19
25 Windsor	34	15	8	34	24	20	15	24	18	38
26 York	28	36	36	52	43	44	42	22	44	27
Total	940	903	868	984	928	1071	966	823	987	919

5c. Total Enrolment in Language Courses (3rd Year)



CAUTG Enrolment Survey May 2010

Table 5d

Enrolment in Language Courses (4th Year)

University	00-01	01-02	02-03	03-04	04-05	05-06	06-07	07-08	08-09	09-10
1 Alberta	36	35	19	40	25	38	32	0	38	0
2 Brandon	0	0	0	0	0	0	0	0	0	0
3 UBC	35	36	47	53	38	27	32	41	43	45
4 Brock	8	2	4	0	0	0	0	0	0	0
5 Calgary	19	15	20	12	8	29	18	34	16	28
6 Dalhousie	0	0	0	0	0	0	0	0	0	0
7 Guelph	0	0	0	0	0	0	0	0	0	0
8 Lakehead	0	0	0	0	0	0	0	0	0	0
9 Laval	0	0	0	64	0	0	0	0	0	51
10 McGill	34	0	17	17	15	10	9	11	12	0
11 McMaster	20	21	11	6	8	0	8	0	7	15
12 Memorial	0	0	0	10	0	0	5	0	10	0
13 Montreal	0	0	0	0	0	0	0	0	0	0
14 Mt.Allison	0	0	0	0	0	0	0	0	0	0
15 UNB	3	5	4	8	4	4	8	0	1	4
16 Ottawa	0	0	0	0	0	0	0	0	0	0
17 Queen's	0	0	31	17	18	20	8	9	15	16
18 Regina	0	7	2	8	4	0	6	8	3	3
19 St.Mary's	0	0	0	0	0	0	5	23	0	8
20 Toronto & UTM	73	0	17	55	24	20	27	14	12	15
21 Victoria	32	45	60	60	56	12	16	14	16	10
22 Waterloo	47	0	0	0	0	0	0	0	0	0
23 W. Ontario	0	0	0	12	0	0	0	0	0	0
24 Wilfrid L.	12	8	10	6	0	0	0	0	0	0
25 Windsor	0	21	0	0	20	2	3	0	3	0
26 York	26	16	19	18	35	24	17	14	17	17
Total	345	211	261	386	255	186	194	168	193	212

5d. Total Enrolment in Language Courses (4th Year)

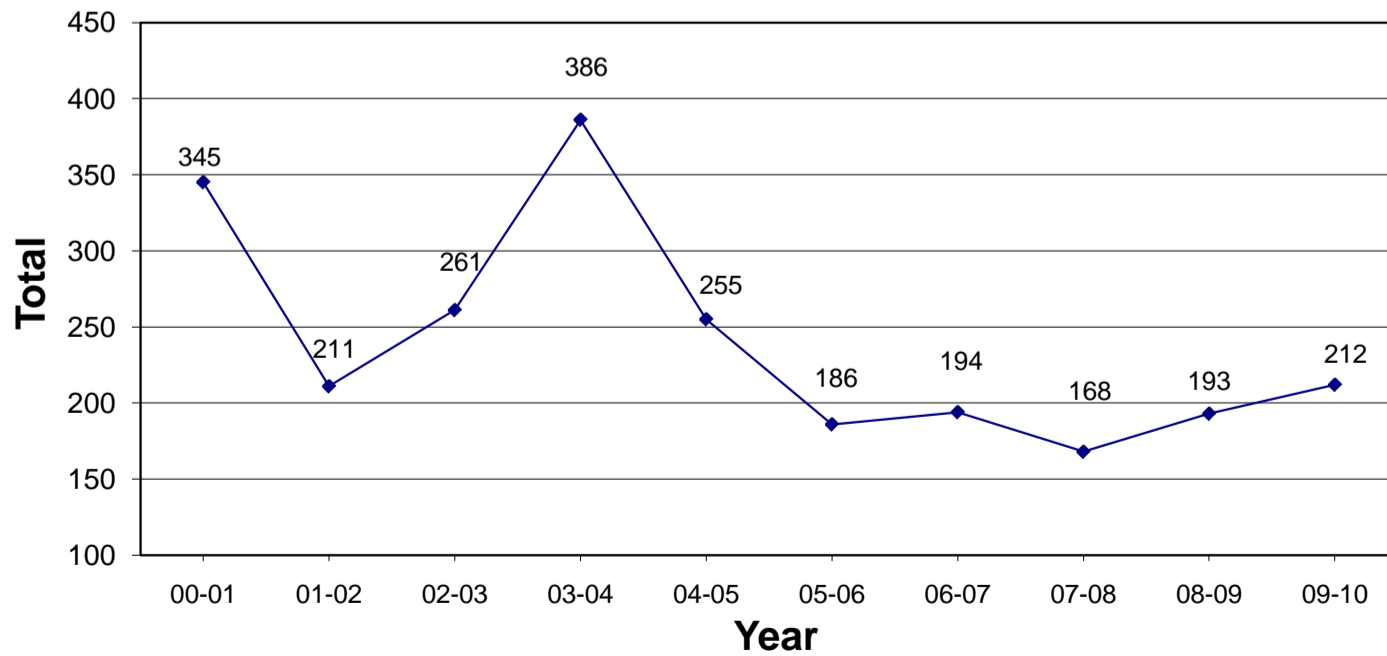


Table 6
Enrolment in Reading Courses

University	92-93	93-94	94-95	95-96	96-97	97-98	98-99	99-00	00-01	01-02	02-03	03-04	04-05	05-06	06-07	07-08	08-09	09-10
1 Alberta	107	192	122	104	62	70	76	56	48	46	34	48	52	46	56	40	30	48
2 Brandon	0	0	0	0	0	0	0	0	0	0	0	0	0	0	0	0	0	0
3 UBC	87	118	164	222	250	192	242	587	879	221	399	386	581	426	321	346	332	348
4 Brock	0	0	0	0	0	0	0	0	0	0	0	0	0	0	0	0	0	0
5 Calgary	123	116	112	115	113	97	88	91	105	4	4	6	0	0	0	0	0	0
6 Dalhousie	82	100	74	0	77	0	12	0	1	27	36	40	34	20	28	0	0	0
7 Guelph	0	0	0	0	5	0	0	0	0	0	0	0	0	0	0	0	0	0
8 Lakehead	0	0	0	0	0	0	0	0	4	0	0	0	0	0	0	0	0	0
9 Laval	10	39	112	51	0	32	14	0	0	0	0	0	0	0	0	0	0	17
10 McGill	5	24	30	1	2	7	18	5	0	0	0	0	31	0	24	1	0	0
11 McMaster	0	0	0	0	0	0	0	0	0	0	0	0	0	0	0	17	0	0
12 Memorial	29	0	0	19	0	18	0	0	0	0	0	0	25	0	0	0	1	1
13 Montreal	76	77	57	59	102	88	0	0	0	9	5	21	6	13	3	5	0	71
14 Mt.Allison	0	0	0	0	0	0	0	0	0	0	0	0	0	0	0	0	0	0
15 UNB	280	137	262	228	196	149	87	0	82	49	44	54	79	39	33	13	0	0
16 Ottawa	4	0	0	0	0	0	0	0	13	0	0	20	0	0	0	0	0	0
17 Queen's	0	0	0	0	0	0	0	13	28	37	60	88	113	113	93	101	69	67
18 Regina	0	0	4	0	0	1	4	1	0	1	1	0	0	0	0	0	0	0
19 St.Mary's	5	0	0	0	0	0	0	0	0	0	0	0	0	0	0	0	0	0
20 Toronto	51	171	80	85	84	65	58	36	62	39	104	40	72	38	90	0	89	0
21 Victoria	26	22	20	26	17	39	27	6	29	1	0	0	0	0	0	0	0	20
22 Waterloo	29	29	9	27	9	8	0	0	5	0	0	0	2	0	0	0	0	0
23 W.	0	40	64	0	0	0	6	0	0	14	11	0	0	1	0	0	0	0
24 Wilfrid L.	0	0	0	0	0	0	0	0	0	0	0	0	0	0	0	0	0	0
25 Windsor	0	0	0	0	0	0	0	0	0	0	0	22	0	0	0	4	0	2
26 York	0	0	0	0	6	36	18	16	16	9	0	0	0	0	0	0	0	0
Total	914	1065	1110	937	923	802	650	811	1272	457	698	725	995	696	648	527	521	574

6. Total Enrolment in Reading Courses

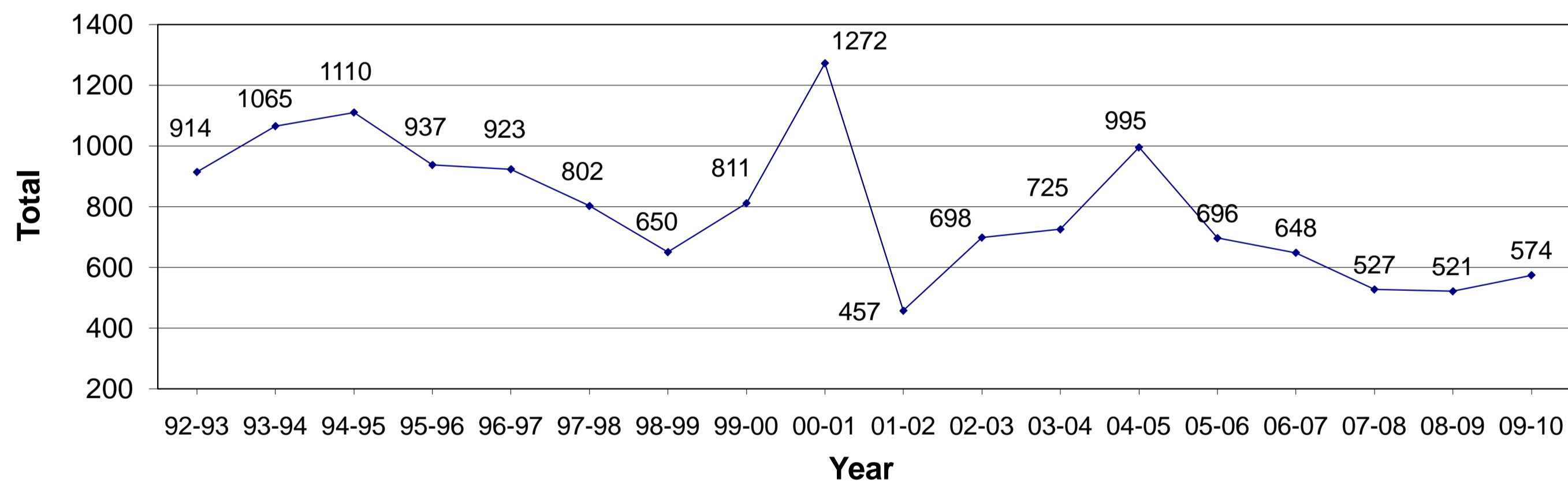


Table 7
Enrolment in Culture Studies Taught in German

University	92-93	93-94	94-95	95-96	96-97	97-98	98-99	99-00	00-01	01-02	02-03	03-04	04-05	05-06	06-07	07-08	08-09	09-10
1 Alberta	46	36	17	36	55	42	50	15	21	0	13	10	9	0	14	39	47	32
2 Brandon	0	3	0	0	1	11	0	0	0	0	0	0	0	0	0	0	0	0
3 UBC	52	0	0	0	0	0	0	0	0	0	0	0	0	0	0	20	6	0
4 Brock	0	0	40	77	65	0	42	14	0	86	69	0	0	0	0	0	0	0
5 Calgary	0	14	26	19	28	9	41	38	41	143	177	18	13	22	4	15	0	21
6 Dalhousie	20	12	22	62	31	5	86	0	0	0	0	19	9	0	0	8	0	0
7 Guelph	0	13	15	0	18	18	6	5	11	15	13	12	16	14	5	0	13	7
8 Lakehead	0	0	0	0	0	0	0	0	0	0	0	0	0	0	0	0	0	0
9 Laval	20	9	6	0	10	7	10	0	0	13	0	9	0	0	0	0	0	0
10 McGill	5	17	22	14	6	0	0	0	0	0	0	14	0	0	16	10	6	0
11 McMaster	0	0	0	0	0	0	0	18	11	15	6	0	19	27	26	23	0	11
12 Memorial	0	0	0	0	0	3	0	0	0	0	0	0	0	0	0	0	0	0
13 Montreal	112	21	12	38	23	16	44	35	52	62	46	38	69	83	42	26	14	40
14 Mt.Allison	0	9	0	0	0	28	0	0	0	0	0	0	0	0	0	0	0	0
15 UNB	0	0	18	12	9	0	6	75	0	52	0	28	24	16	6	0	0	0
16 Ottawa	0	0	58	0	0	0	0	0	0	12	0	0	0	0	0	0	0	0
17 Queen's	0	0	0	40	56	78	64	10	42	27	26	57	38	34	20	17	21	15
18 Regina	0	0	0	2	0	6	0	9	1	3	7	13	11	9	28	15	0	4
19 St.Mary's	0	0	0	0	0	0	4	4	2	0	0	0	0	0	0	0	0	0
20 Toronto	0	0	0	0	0	17	26	24	0	66	40	42	0	45	15	50	23	22
21 Victoria	0	0	0	37	35	41	59	44	102	64	30	60	83	0	0	0	0	13
22 Waterloo	180	242	252	189	98	146	108	154	103	187	154	181	0	0	0	0	0	0
23 W.	0	11	22	10	0	0	0	0	0	0	0	0	0	0	0	0	0	0
24 Wilfrid L.	0	0	0	0	0	0	0	11	17	11	31	38	0	0	0	11	23	16
25 Windsor	0	0	0	0	0	0	0	0	0	0	0	0	0	0	0	0	0	0
26 York	0	0	12	0	13	12	8	0	0	0	0	12	0	0	0	33	28	15
Total	435	387	522	536	448	439	554	456	403	756	612	551	291	250	176	267	181	196

7. Total Enrolment in Culture Studies Taught in German

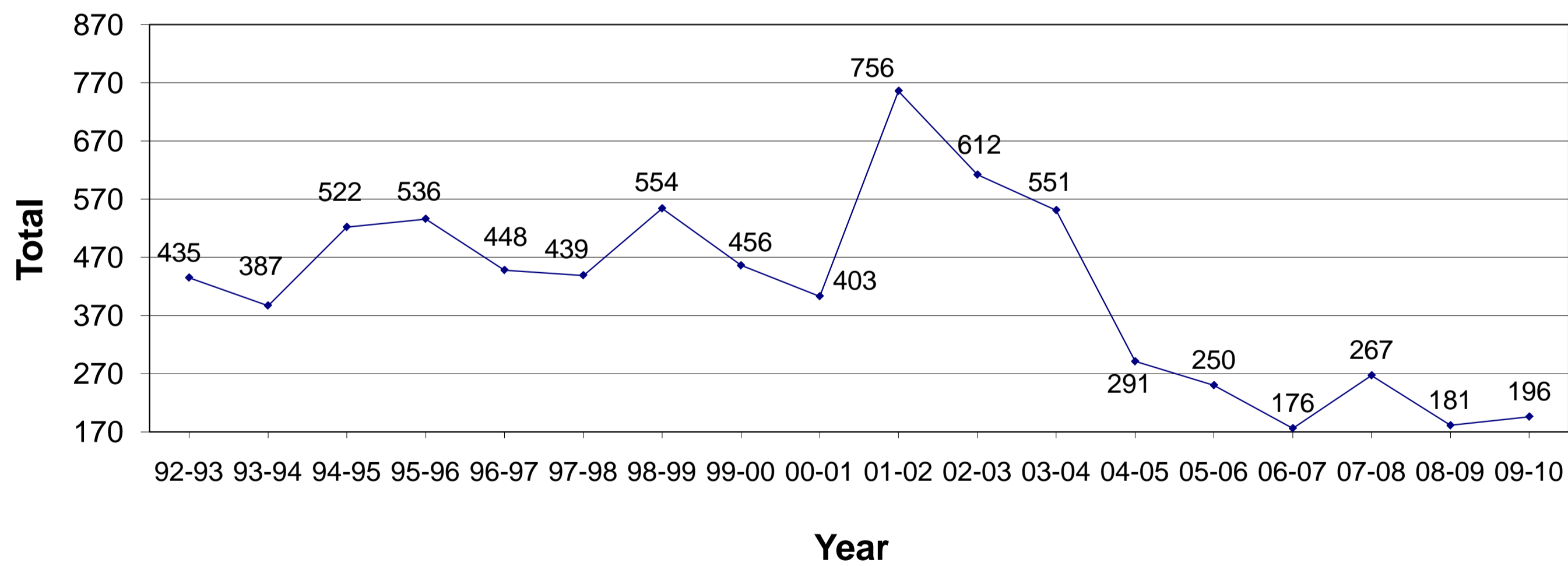


Table 8
Enrolment in Culture Studies Taught in Translation

University	92-93	93-94	94-95	95-96	96-97	97-98	98-99	99-00	00-01	01-02	02-03	03-04	04-05	05-06	06-07	07-08	08-09	09-10
1 Alberta	0	0	0	0	0	0	0	7	9	0	0	6	11	10	0	0	3	10
2 Brandon	0	0	0	0	0	0	0	0	0	0	0	0	0	0	0	0	0	0
3 UBC	0	0	0	8	8	0	12	14	6	0	103	127	0	289	181	272	51	158
4 Brock	0	58	0	0	0	0	0	0	0	0	0	41	28	24	21	29	34	27
5 Calgary	0	31	37	37	31	0	59	0	40	40	68	59	153	131	138	101	98	94
6 Dalhousie	0	32	0	14	24	11	522	366	326	441	522	611	325	366	370	305	361	260
7 Guelph	11	0	0	0	0	0	10	11	13	18	15	12	27	22	18	12	12	23
8 Lakehead	0	0	0	0	0	0	0	0	0	0	0	0	0	0	0	0	0	0
9 Laval	0	12	0	0	0	0	10	21	7	0	0	0	0	0	0	0	0	0
10 McGill	0	8	0	12	0	0	0	0	131	26	61	95	110	0	65	92	88	66
11 McMaster	0	12	0	0	22	0	9	0	0	0	12	0	9	0	0	0	0	22
12 Memorial	28	35	31	34	35	45	37	96	119	105	105	60	109	65	130	96	110	171
13 Montreal	0	21	25	42	0	0	0	39	33	30	41	35	72	51	23	29	33	28
14 Mt.Allison	77	97	94	89	83	51	51	19	49	94	65	28	0	59	11	24	18	29
15 UNB	0	0	0	0	0	0	0	0	28	0	13	0	0	0	0	50	7	19
16 Ottawa	36	26	39	0	52	0	27	0	16	0	39	43	69	102	106	72	111	83
17 Queen's	34	55	35	0	0	54	0	0	0	0	27	20	26	78	50	40	48	77
18 Regina	0	0	0	0	0	0	0	0	0	9	0	0	0	0	0	0	19	18
19 St.Mary's	0	0	0	0	0	0	0	2	0	0	5	32	37	34	37	0	0	15
20 Toronto & UTM	64	58	0	135	190	121	142	110	61	22	18	17	70	118	92	129	74	103
21 Victoria	72	35	37	0	0	0	0	0	28	160	215	232	268	428	399	252	493	446
22 Waterloo	0	0	0	0	0	0	8	0	5	0	0	3	245	229	340	278	548	361
23 W. Ontario	68	42	27	0	0	0	44	0	0	0	10	0	0	0	0	0	0	0
24 Wilfrid L.	0	0	0	0	0	0	153	147	0	57	0	38	0	0	13	0	0	0
25 Windsor	48	90	73	42	39	27	88	71	51	60	52	0	42	31	102	83	342	373
26 York	0	84	120	75	84	92	130	156	153	140	103	104	151	203	154	204	184	158
Total	438	696	518	488	568	401	1302	1059	1075	1202	1474	1563	1752	2240	2250	2068	2634	2541

8. Total Enrolment in Culture Studies Taught in Translation

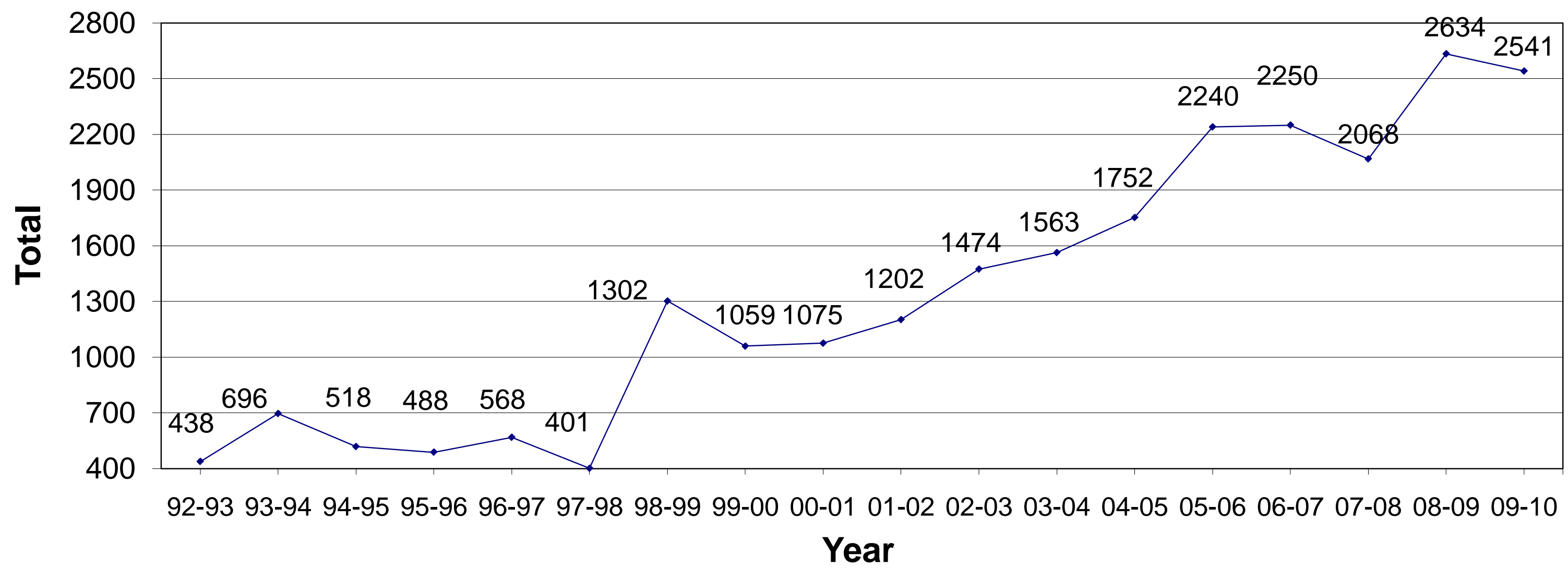


Table 9
Enrolment in Literature

University	92-93	93-94	94-95	95-96	96-97	97-98	98-99	99-00	00-01	01-02	02-03	03-04	04-05	05-06	06-07	07-08	08-09	09-10
1 Alberta	46	62	48	58	33	36	34	45	30	36	37	31	39	33	39	0	9	41
2 Brandon	0	0	0	1	11	2	0	0	0	0	0	0	0	0	0	0	0	0
3 UBC	142	123	131	128	72	119	79	79	59	73	92	320	0	124	62	33	30	77
4 Brock	8	38	29	35	37	31	12	56	10	0	0	14	4	5	8	0	0	0
5 Calgary	75	93	75	103	80	61	18	41	35	22	37	23	0	8	16	11	11	16
6 Dalhousie	70	98	124	50	56	80	74	74	92	74	109	94	73	68	105	49	60	72
7 Guelph	35	37	27	29	32	29	12	26	20	32	29	28	27	25	17	17	17	24
8 Lakehead	0	0	0	0	0	0	0	0	0	0	0	0	0	0	0	0	0	0
9 Laval	19	13	19	0	45	0	7	0	0	20	13	4	0	0	0	0	0	0
10 McGill	107	120	143	183	193	90	76	103	50	85	53	54	92	51	40	27	29	88
11 McMaster	74	40	87	73	40	37	30	42	19	29	27	25	16	0	0	22	8	0
12 Memorial	14	44	19	43	35	20	9	1	8	14	19	26	17	19	2	7	9	9
13 Montreal	128	150	58	92	109	90	84	68	80	64	79	45	69	84	48	57	48	55
14 Mt.Allison	27	29	37	31	22	12	11	18	25	32	23	22	22	13	22	11	19	27
15 UNB	20	4	9	6	15	1	3	0	4	0	0	26	18	0	0	2	17	0
16 Ottawa	40	43	39	69	0	30	19	11	0	8	8	8	11	13	16	18	10	12
17 Queen's	24	69	67	76	21	35	28	60	48	53	42	20	32	29	26	28	29	27
18 Regina	9	7	26	20	21	10	11	5	14	13	2	4	8	8	3	0	9	7
19 St.Mary's	0	8	4	44	0	23	2	0	1	0	0	0	12	0	0	0	0	0
20 Toronto & UTM	206	270	219	175	155	135	161	131	141	167	142	138	77	107	136	91	97	85
21 Victoria	236	50	50	62	59	46	45	131	74	68	69	89	0	0	0	13	0	0
22 Waterloo	123	110	95	79	90	75	70	81	58	94	24	18	12	19	17	6	3	18
23 W. Ontario	86	60	27	51	54	24	0	37	38	46	46	40	29	22	15	22	20	22
24 Wilfrid L.	62	58	40	32	32	30	0	8	7	0	7	0	13	0	0	0	0	0
25 Windsor	25	26	16	14	1	5	0	0	4	7	5	4	0	3	64	0	0	0
26 York	125	120	64	56	58	33	58	74	30	18	15	26	11	27	37	10	10	10
Total	1701	1672	1453	1510	1271	1054	843	1091	847	955	878	1059	582	658	673	424	435	590

9. Total Enrolment in Literature

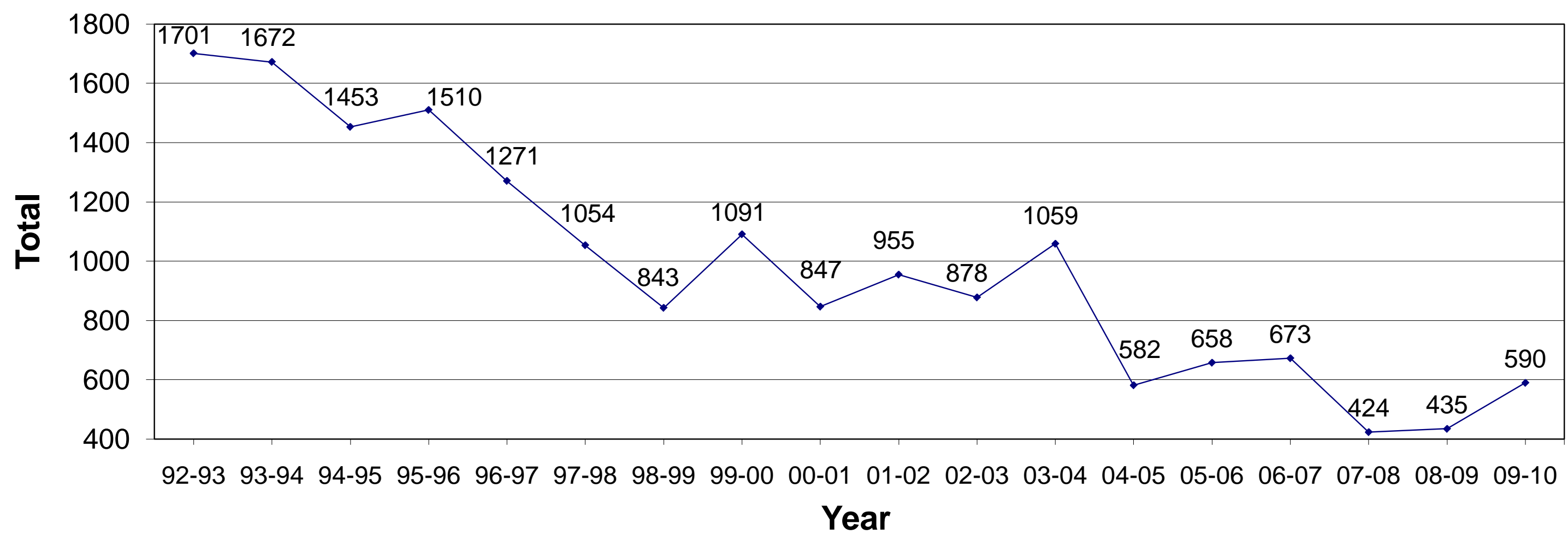
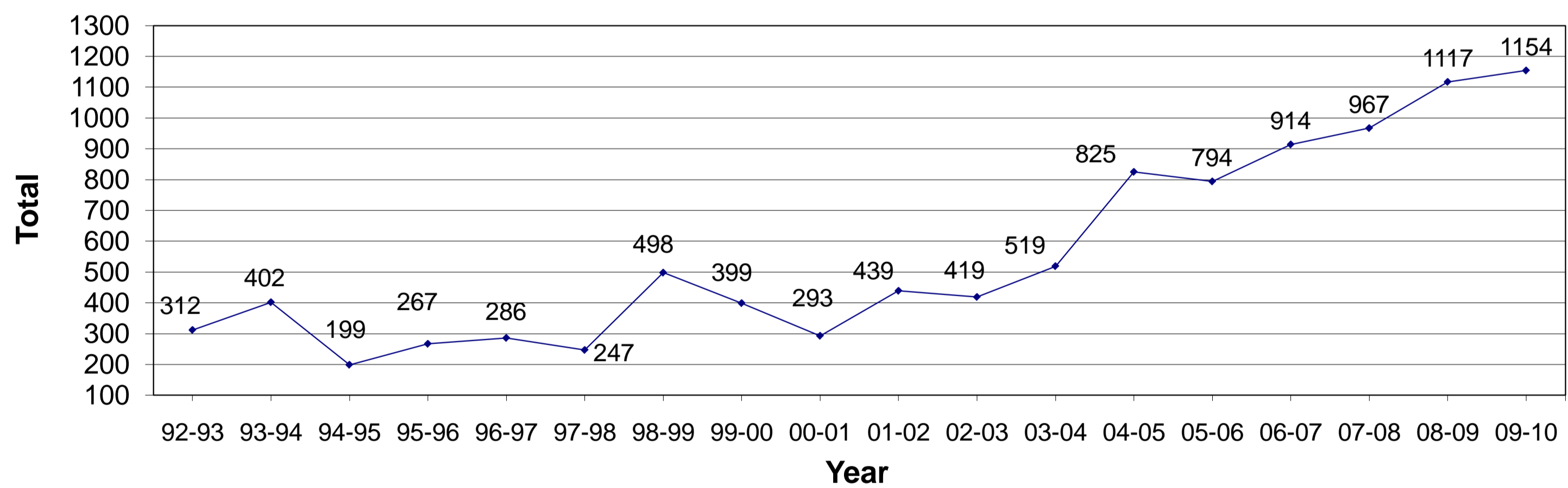


Table 10
Enrolment in Literature in Translation

University	92-93	93-94	94-95	95-96	96-97	97-98	98-99	99-00	00-01	01-02	02-03	03-04	04-05	05-06	06-07	07-08	08-09	09-10
1 Alberta	0	0	0	10	0	0	0	10	0	0	0	0	0	0	0	0	0	0
2 Brandon	0	0	0	0	0	0	0	0	0	0	0	0	0	0	0	0	0	0
3 UBC	40	138	24	19	69	75	140	106	113	138	161	239	400	312	523	495	548	649
4 Brock	0	0	0	0	0	0	3	0	0	0	0	0	0	0	0	0	0	0
5 Calgary	35	0	0	0	42	0	24	22	0	8	0	11	0	14	17	0	43	37
6 Dalhousie	0	26	20	0	26	36	0	28	0	0	0	0	0	0	0	0	12	10
7 Guelph	0	0	0	0	0	34	4	6	8	6	10	21	5	0	14	18	67	39
8 Lakehead	0	0	0	0	0	0	0	0	0	0	0	0	0	0	0	0	0	0
9 Laval	0	6	0	0	0	0	65	0	25	12	0	33	0	0	0	0	0	0
10 McGill	22	22	62	52	31	40	137	80	24	137	146	0	78	102	94	77	109	82
11 McMaster	0	16	24	12	10	27	18	15	0	40	0	0	0	10	0	14	10	0
12 Memorial	99	60	0	0	0	0	0	3	0	0	0	0	2	35	9	11	10	1
13 Montreal	0	30	20	18	0	0	15	24	0	0	0	50	25	31	26	29	67	21
14 Mt.Allison	0	0	0	0	0	0	0	0	0	0	0	0	0	0	0	0	0	0
15 UNB	0	0	0	0	0	0	0	0	8	5	0	3	12	11	0	0	0	20
16 Ottawa	89	0	0	0	0	0	0	0	9	16	0	18	0	32	0	0	0	20
17 Queen's	0	100	24	42	60	0	49	61	30	7	11	24	22	11	22	0	5	26
18 Regina	0	4	0	0	0	14	9	7	0	0	0	0	0	0	0	7	0	0
19 St.Mary's	5	0	0	0	0	0	0	0	0	0	0	0	0	0	10	0	21	0
20 Toronto	22	0	25	74	0	0	22	22	76	18	32	29	32	20	35	18	21	12
21 Victoria	0	0	0	0	9	7	0	0	0	0	0	0	224	82	80	151	39	141
22 Waterloo	0	0	0	0	0	0	0	0	0	0	0	4	0	0	12	39	44	0
23 W.	0	0	0	0	0	0	0	0	0	0	0	25	0	0	0	0	0	0
24 Wilfrid L.	0	0	0	0	0	0	0	0	0	0	0	0	0	0	0	0	0	0
25 Windsor	0	0	0	0	19	0	12	15	0	8	59	40	25	82	0	78	75	94
26 York	0	0	0	40	20	14	0	0	0	44	0	22	0	52	72	30	46	2
Total	312	402	199	267	286	247	498	399	293	439	419	519	825	794	914	967	1117	1154

10. Total Enrolment in Literature in Translation



CAUTG Enrolment Survey May 2010

Table 11

CAUTG Enrolment Survey - Colleges

College	92-93	93-94	94-95	95-96	96-97	97-98	98-99	99-00	00-01	01-02	02-03	03-04	04-05	05-06	06-07	07-08	08-09	09-10
										60								
1 Ahuntsic	n.d.	210	87	226	200	212	n.d.	215	n.d.	155	240	n.d.	n.d.	165	220	202	n.d.	n.d.
2 Brescia	n.d.	n.d.	n.d.	n.d.	n.d.	n.d.	n.d.	40	60	36	24	18	8	cancl.	cancl.	cancl.	cancl.	n.d.
3 Capilano	n.d.	n.d.	n.d.	n.d.	113	103	n.d.	134	129	n.d.	116	120	143	120	79	34	56	n.d.
4 Cariboo	n.d.	n.d.	n.d.	122	143	130	n.d.	n.d.	156	124	210	n.d.	n.d.	n.d.	n.d.	n.d.	n.d.	n.d.
5 Champlain St. Laur.	n.d.	121	145	n.d.	n.d.	n.d.	n.d.	n.d.	n.d.	n.d.	220	n.d.	n.d.	n.d.	n.d.	n.d.	n.d.	n.d.
6 Dawson	220	n.d.	n.d.	n.d.	n.d.	n.d.	n.d.	n.d.	n.d.	n.d.	n.d.	n.d.	n.d.	n.d.	n.d.	n.d.	n.d.	n.d.
7 Douglas	n.d.	106	130	83	92	113	n.d.	170	168	185	180	170	164	129	77	87	92	92
8 Francois-Xavier-G.	n.d.	n.d.	n.d.	n.d.	n.d.	n.d.	n.d.	n.d.	n.d.	n.d.	n.d.	n.d.	240	n.d.	n.d.	n.d.	n.d.	n.d.
9 Fraser Valley	n.d.	n.d.	n.d.	n.d.	n.d.	n.d.	n.d.	n.d.	51	42	0	cancl.	cancl.	cancl.	cancl.	cancl.	cancl.	n.d.
10 Grande Prairie Regional	n.d.	n.d.	n.d.	n.d.	n.d.	n.d.	n.d.	n.d.	cancl.	n.d.	n.d.	n.d.	n.d.	n.d.	n.d.	n.d.	n.d.	n.d.
11 Grant MacEwan	n.d.	n.d.	34	53	88	96	60	110	125	91	72	112	97	89	127	113	98	102
12 Jean-de-Brébeuf	n.d.	n.d.	n.d.	75	n.d.	n.d.	n.d.	n.d.	n.d.	n.d.	n.d.	n.d.	n.d.	n.d.	n.d.	n.d.	n.d.	n.d.
13 John Abbott	176	175	n.d.	168	n.d.	n.d.	n.d.	n.d.	n.d.	n.d.	n.d.	n.d.	n.d.	n.d.	n.d.	n.d.	n.d.	n.d.
14 Joliette-de-Lanoulière	n.d.	n.d.	n.d.	n.d.	n.d.	44	n.d.	n.d.	n.d.	n.d.	n.d.	n.d.	n.d.	n.d.	n.d.	n.d.	n.d.	n.d.
15 Kwantlen	n.d.	n.d.	n.d.	n.d.	n.d.	n.d.	n.d.	93	135	149	140	145	165	125	108	125	163	n.d.
16 Langara	n.d.	n.d.	127	149	166	n.d.	4	cancl.	cancl.	cancl.	cancl.	cancl.	cancl.	cancl.	cancl.	cancl.	cancl.	n.d.
17 Lévis-Lauzon	107	145	183	212	260	360	n.d.	242	n.d.	326	n.d.	n.d.	n.d.	n.d.	n.d.	n.d.	n.d.	n.d.
18 de Limoilou	n.d.	n.d.	n.d.	n.d.	n.d.	176	n.d.	n.d.	n.d.	n.d.	n.d.	n.d.	n.d.	n.d.	n.d.	n.d.	n.d.	n.d.
19 Marie-Victorin	n.d.	n.d.	n.d.	47	80	57	n.d.	49	30	30	30	30	30	cancl.	cancl.	cancl.	cancl.	n.d.
20 de Maisonneuve	n.d.	123	n.d.	228	n.d.	n.d.	n.d.	n.d.	n.d.	n.d.	n.d.	n.d.	n.d.	n.d.	n.d.	n.d.	n.d.	n.d.
21 Malaspina	n.d.	n.d.	n.d.	n.d.	n.d.	n.d.	n.d.	n.d.	0	0	0	0	n.d.	0	0	0	n.d.	n.d.
22 Marianopolis	n.d.	316	n.d.	n.d.	n.d.	n.d.	n.d.	n.d.	n.d.	n.d.	n.d.	n.d.	n.d.	n.d.	n.d.	n.d.	n.d.	n.d.
23 Marie de France	n.d.	n.d.	n.d.	n.d.	n.d.	74	n.d.	n.d.	n.d.	n.d.	n.d.	n.d.	n.d.	116	0	n.d.	n.d.	n.d.
24 Medicine Hat	24	n.d.	n.d.	n.d.	n.d.	n.d.	n.d.	n.d.	n.d.	n.d.	n.d.	n.d.	n.d.	n.d.	n.d.	n.d.	n.d.	n.d.
25 Montmorency	141	142	152	n.d.	187	213	n.d.	n.d.	n.d.	n.d.	n.d.	n.d.	n.d.	n.d.	n.d.	n.d.	n.d.	n.d.
26 Okanagan	n.d.	200	150	143	n.d.	n.d.	n.d.	180	122	100	102	118	n.d.	n.d.	n.d.	n.d.	79	186
27 Mount Royal	n.d.	180	n.d.	159	n.d.	155	n.d.	n.d.	301	n.d.	n.d.	n.d.	n.d.	n.d.	n.d.	n.d.	n.d.	n.d.
28 N. American Baptist	n.d.	n.d.	22	11	n.d.	20	n.d.	n.d.	n.d.	n.d.	n.d.	n.d.	n.d.	n.d.	n.d.	n.d.	n.d.	n.d.
29 Rivière-du-Loup	n.d.	18	n.d.	n.d.	n.d.	n.d.	n.d.	n.d.	n.d.	n.d.	n.d.	n.d.	n.d.	n.d.	n.d.	n.d.	n.d.	n.d.
30 Rosemont	167	183	217	n.d.	190	160	n.d.	n.d.	n.d.	n.d.	n.d.	n.d.	n.d.	n.d.	n.d.	n.d.	n.d.	n.d.
31 Sainte-Foy	n.d.	n.d.	265	n.d.	355	n.d.	n.d.	n.d.	n.d.	n.d.	n.d.	n.d.	n.d.	n.d.	n.d.	n.d.	n.d.	n.d.
32 St.-Jérôme	n.d.	n.d.	n.d.	123	120	136	n.d.	n.d.	n.d.	n.d.	50	cancl.	cancl.	cancl.	cancl.	cancl.	cancl.	n.d.
33 Sherbrooke	n.d.	n.d.	n.d.	n.d.	136	n.d.	n.d.	n.d.	n.d.	n.d.	n.d.	n.d.	n.d.	n.d.	n.d.	n.d.	n.d.	n.d.
34 Trois-Rivières	n.d.	n.d.	100	n.d.	n.d.	n.d.	n.d.	n.d.	n.d.	n.d.	n.d.	n.d.	n.d.	n.d.	n.d.	n.d.	n.d.	n.d.
35 Vanier	n.d.	n.d.	201	199	n.d.	n.d.	n.d.	107	n.d.	n.d.	n.d.	n.d.	174	155	n.d.	n.d.	195	192
36 CÉGEP du Vieux-Montréal	n.d.	n.d.	180	278	185	210	n.d.	n.d.	n.d.	n.d.	n.d.	n.d.	n.d.	n.d.	n.d.	n.d.	n.d.	n.d.
37 André-Grasset															62	n.d.	n.d.	n.d.

Four colleges reported with healthy enrolments.

Table 12
Graduate Enrolments and Degrees Awarded

		2004-2005 Degrees Awarded					
		M.A.	Ph.D.	Total	M.A.	Ph.D.	Total
1	Alberta	7	3	10	3	0	3
2	UBC	5	5	10	N.D.	N.D.	0
3	Calgary	4	0	4	0	0	0
4	Dalhousie	4	0	4	4	0	4
5	McGill	7	7	14	4	1	5
6	Memorial	2	0	2	1	0	1
7	Montréal	6	2	8	N.D.	N.D.	0
8	Queen's	5	7	12	3	2	5
9	Toronto	7	8	15	3	3	6
10	Victoria	3	0	3	0	0	0
11	Waterloo	18	6	24	11	0	11
Totals		68	38	106	29	6	35

		2005-2006 Degrees Awarded					
		M.A.	Ph.D.	Total	M.A.	Ph.D.	Total
1	Alberta	11	3	14	2	0	2
2	UBC	6	5	11	3	0	3
3	Calgary	6	0	6	1	0	1
4	Dalhousie	4	0	4	4	0	4
5	Manitoba	1	0	1	0	0	0
6	McGill	4	7	11	0	0	0
7	Memorial	1	0	1	0	0	0
8	Montréal	16	3	19	1	1	2
9	Queen's	6	11	17	2	1	3
10	Toronto	4	10	14	5	3	8
11	Victoria	4	0	4	0	0	0
12	Waterloo	16	6	22	13	1	14
Totals		79	45	124	31	6	37

		2006-2007 Degrees Awarded					
		M.A.	Ph.D.	Total	M.A.	Ph.D.	Total
1	Alberta	8	5	13	3	0	3
2	UBC	6	8	14	0	1	1
3	Calgary	6	0	6	1	0	1
4	Dalhousie	7	0	7	3	0	3
5	Manitoba	1	0	1	0	0	0
6	McGill	3	7	10	1	1	2
7	Memorial	0	0	0	1	0	1
8	Montréal	18	4	22	1	0	1
9	Queen's	6	8	14	2	2	4
10	Toronto	4	12	16	2	1	3
11	Victoria	4	0	4	0	0	0
12	Waterloo	15	8	23	13	0	13
Totals		78	52	130	27	5	32

		2007-2008 Degrees Awarded					
		M.A.	Ph.D.	Total	M.A.	Ph.D.	Total
1	Alberta	6	5	11	2	0	2
2	UBC	5	9	14	3	1	4
3	Calgary	6	0	6	1	0	1
4	Dalhousie	3	0	3	7	0	7
5	Manitoba	1	0	1	0	0	0
6	McGill	3	10	13	0	0	0
7	Memorial	0	0	0	0	0	0
8	Montréal	18	8	26	4	0	4
9	Queen's	6	10	16	2	0	2
10	Toronto	3	14	17	1	0	1
11	Victoria	3	0	3	1	0	1
12	Waterloo	18	8	26	11	0	11
Totals		72	64	136	32	1	33

		2008-2009 Degrees Awarded					
		M.A.	Ph.D.	Total	M.A.	Ph.D.	Total
1	Alberta	5	9	14	1	1	2
2	UBC	1	13	14	1	0	1
3	Calgary	7	0	7	3	0	3
4	Dalhousie	4	0	4	3	0	3
5	Manitoba	2	0	2	0	0	0
6	McGill	5	8	13	2	2	4
7	Memorial	1	0	1	0	0	0
8	Montréal	14	8	22	0	0	0
9	Queen's	4	12	16	4	1	5
10	Toronto	4	13	17	2	1	3
11	Victoria	5	0	5	0	0	0
12	Waterloo	19	7	26	11	0	11
Totals		71	70	141	27	5	32

		2009-2010 Degrees Awarded					
		M.A.	Ph.D.	Total	M.A.	Ph.D.	Total
1	Alberta	4	6	10	2	0	2
2	UBC	0	12	12	0	0	0
3	Calgary	5	0	5	1	0	1
4	Dalhousie	4	1	5	4	0	4
5	Manitoba	3	0	3	0	0	0
6	McGill	5	8	13	0	2	2
7	Memorial	1	0	1	1	0	1
8	Montréal	8	4	12	2	2	4
9	Queen's	5	9	14	1	1	2
10	Toronto	4	15	19	1	0	1
11	Victoria	7	0	7	3	0	3
12	Waterloo	14	8	22	16	1	17
Totals		60	63	123	31	6	37

There were 123 graduate students enrolled in 2009-2010, compared to 141 the previous year. The M.A.s decreased by 11 and the Ph.D.s decreased by 7, for an overall decrease in graduate enrolments of 18.

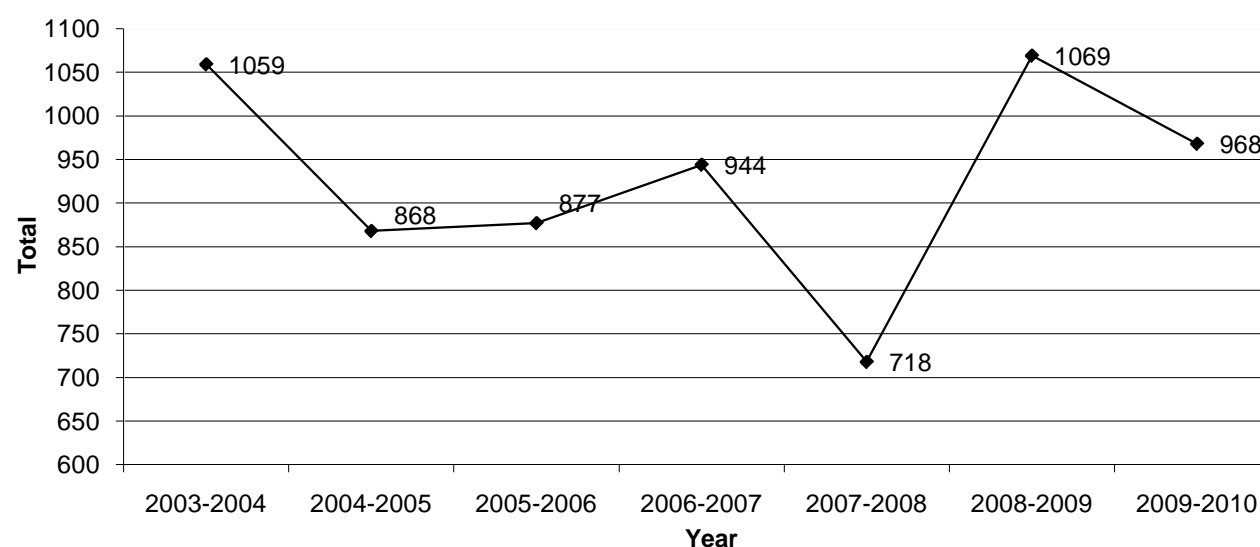
The number of M.A.s awarded increased by 4, and the number of Ph.D.s awarded increased by 1, for an overall increase in graduate degrees awarded of 5.

CAUTG Enrolment Survey May 2010

**Table 13
Film Courses**

Universities	2003-2004	2004-2005	2005-2006	2006-2007	2007-2008	2008-2009	2009-2010
Bishop's	0	0	10	0	0	10	24
Brock	0	0	0	5	0	0	0
Calgary	37	46	50	40	0	39	31
Dalhousie	610	322	348	320	228	344	260
Guelph	0	10	11	0	11	0	0
Laurentian	0	0	13	0	0	0	0
Manitoba	0	0	8	0	11	0	8
McGill	0	0	0	25	37	39	37
McMaster	0	0	7	0	19	22	7
Memorial	60	60	0	58	38	38	63
Montréal	50	35	15	0	30	43	32
Mount Allison	28	0	0	0	17	0	29
UNB	17	18	0	13	18	7	11
UQAM	0	0	0	0	0	0	77
Ottawa	23	48	0	37	0	49	0
Queens	0	26	32	19	6	0	0
Regina	0	0	0	9	6	9	4
Saint Mary's	0	0	0	1	0	0	0
Toronto, UTM	17	14	4	54	18	30	17
Victoria	185	260	338	288	240	397	338
Waterloo	32	5	11	12	13	16	13
W.Ontario	0	0	0	0	0	3	0
Wilfrid Laurier	0	24	0	37	0	0	0
York	0	0	30	26	26	23	17
TOTAL	1059	868	877	944	718	1069	968

13. Enrolment in Film Courses



CAUTG Enrolment Survey May 2010

Table 14
Average Class Size - 1st-year Language Fall 09 and 1st-year Language Fall / Winter 09-10 for 37 Universities

Fall 09			
Alphabetical Listing			
University	1st yr lang	#sections	Average
Acadia	155	6	26
Alberta	175	6	29
Augustana	27	2	14
Bishop's	32	1	32
UBC	322	12	27
Brock	81	3	27
Calgary	167	6	28
Carleton	91	3	30
Concordia	154	6	26
Dalhousie	116	4	29
Guelph	116	2	58
Lakehead	17	1	17
Lethbridge	50	2	25
Manitoba	75	3	25
McGill	145	5	29
McMaster	42	1	42
Memorial	228	8	29
Mt. Allison	77	2	39
UNB	11	4	3
Ottawa	220	7	31
Queen's	140	5	28
Regina	75	4	19
Sask.	81	3	27
Simon Fr.	96	5	19
St. F.X.	28	1	28
St. Mary's	64	2	32
Toronto	174	9	19
Trent	79	4	20
Trinity W.	9	1	9
UTM	71	3	24
Victoria	143	5	29
Waterloo	169	8	21
W. Ontario	116	4	29
W. Laurier	145	2	73
Windsor	110	4	28
Winnipeg	33	1	33
York	142	6	24
Average			28

Fall/Winter 09-10			
Alphabetical Listing			
University	1st yr lang	#sections	Average
Acadia	248	11	23
Alberta	325	12	27
Augustana	44	2	22
Bishop's	48	2	24
UBC	700	28	25
Brock	158	6	26
Calgary	255	10	26
Carleton	126	5	25
Concordia	251	9	28
Dalhousie	232	8	29
Guelph	247	4	62
Lakehead	34	2	17
Lethbridge	70	3	23
Manitoba	150	6	25
McGill	341	10	34
McMaster	84	2	42
Memorial	389	13	30
Mt. Allison	114	4	29
UNB	202	8	25
Ottawa	329	11	30
Queen's	228	10	23
Regina	132	7	19
Sask.	121	5	24
Simon Fr.	181	10	18
St. F.X.	56	2	28
St. Mary's	89	3	30
Toronto	362	19	19
Trent	147	8	18
Trinity W.	16	2	8
UTM	141	6	24
Victoria	308	10	31
Waterloo	284	15	19
W. Ontario	232	8	29
W. Laurier	206	3	69
Windsor	110	4	28
Winnipeg	60	2	30
York	284	12	24
Average			27

Fall/Winter 09-10	
Listed by Market Share	
Trinity W.	8
Lakehead	17
Simon Fr.	18
Trent	18
Regina	19
Waterloo	19
Toronto	19
Augustana	22
Acadia	23
Queen's	23
Lethbridge	23
UTM	24
York	24
Bishop's	24
Sask.	24
Manitoba	25
UBC	25
Carleton	25
UNB	25
Calgary	26
Brock	26
Alberta	27
Windsor	28
Concordia	28
St. F.X.	28
Mt. Allison	29
Dalhousie	29
W. Ontario	29
St. Mary's	30
Ottawa	30
Memorial	30
Winnipeg	30
Victoria	31
McGill	34
McMaster	42
Guelph	62
W. Laurier	69

Range	8-69
Median	25
Mean	27

CAUTG Enrolment Survey May 2010

Table 15
Undergraduate Program Enrolments
and Degrees Awarded for 26 Universities

	Majors	Minors	Honours	Total	Degrees Awarded		
					BA	BAH	Total
Acadia	9	N/A	0	9	1	0	1
Alberta	24	33	4	61	3	2	5
UBC	28	18	2	48	7	0	7
Brock	0	10	0	10	0	0	0
Calgary	22	18	0	40	6	0	6
Carleton	0	46	0	46	0	0	0
Concordia	2	77	1	80	0	0	0
Dalhousie	19	N/A	9	28	2	4	6
Guelph	0	14	0	14	0	0	0
Lethbridge	3	0	0	3	0	0	0
Manitoba	12	10	5	27	4	2	6
McGill	15	120*	8	143	8	1	9
Memorial	34	19	1	54	4	0	4
Mount Allison	2	13	0	15	2	0	2
Ottawa	0	31	0	31	0	0	0
Queen's	17	21	0	38	0	6	6
Regina	12	7	0	19	3	0	3
Saint Mary's	15	4	0	19	1	0	1
Saskatchewan	3	0	0	3	3	0	3
Toronto	41	113	0	154	3	0	3
UTM	3	11	0	14	0	0	0
Victoria	13	11	1	25	6	2	8
Waterloo	2	13	24	39	0	1	1
W. Ontario	9	12	2	23	0	1	1
Winnipeg	5	0	0	5	1	0	1
York	10	2	5	17	3	0	3
Totals	300	483	62	965	57	19	76

*Listed as minors but require only 6 courses.

This table will be updated when more universities have reported. It also needs to be redesigned to include categories such as modern language concentrations, specialists, and certificates, with the number of courses required for each.

CAUTG Enrolment Survey May 2010

Table 16
Comparison of Enrolments in Reading, Culture Taught in German (Kultur), Culture Taught in Translation (Culture), Literature Taught in German (Literatur), and Literature Taught in Translation (Literature) Courses from 1992-2010

	92-93	93-94	94-95	95-96	96-97	97-98	98-99	99-00	00-01	01-02	02-03	03-04	04-05	05-06	06-07	07-08	08-09	09-10
Reading	914	1065	1110	937	923	802	650	811	1272	457	698	725	995	696	648	527	521	574
Kultur	435	387	522	536	448	439	554	456	403	756	612	551	291	250	176	267	181	196
Culture	438	696	518	488	568	401	1302	1059	1075	1202	1474	1563	1752	2240	2250	2068	2634	2541
Literatur	1701	1672	1453	1510	1271	1054	843	1091	847	955	878	1059	582	658	673	424	435	590
Literature	312	402	199	267	286	247	498	399	293	439	419	519	825	794	914	967	846	1154

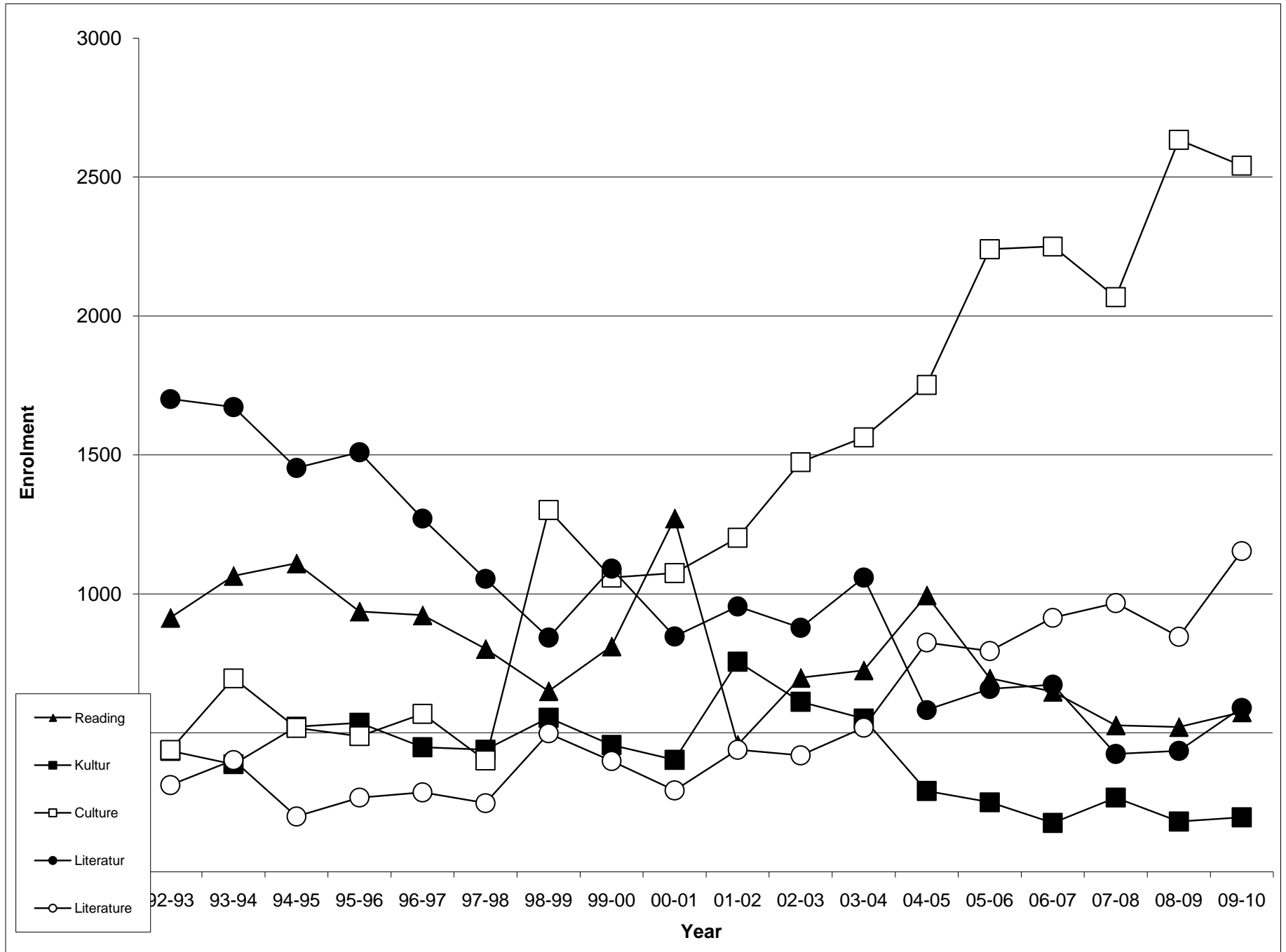


Table 17

Comparison of Enrolments in Language, Reading, Culture Taught in German (Kultur), Culture Taught in Translation (Culture), Literature Taught in German (Literatur), and Literature Taught in Translation (Literature) Courses in 2009-2010

	2009-10
Language	10473
Culture	2541
Literature	1154
Literatur	590
Reading	574
Kultur	196

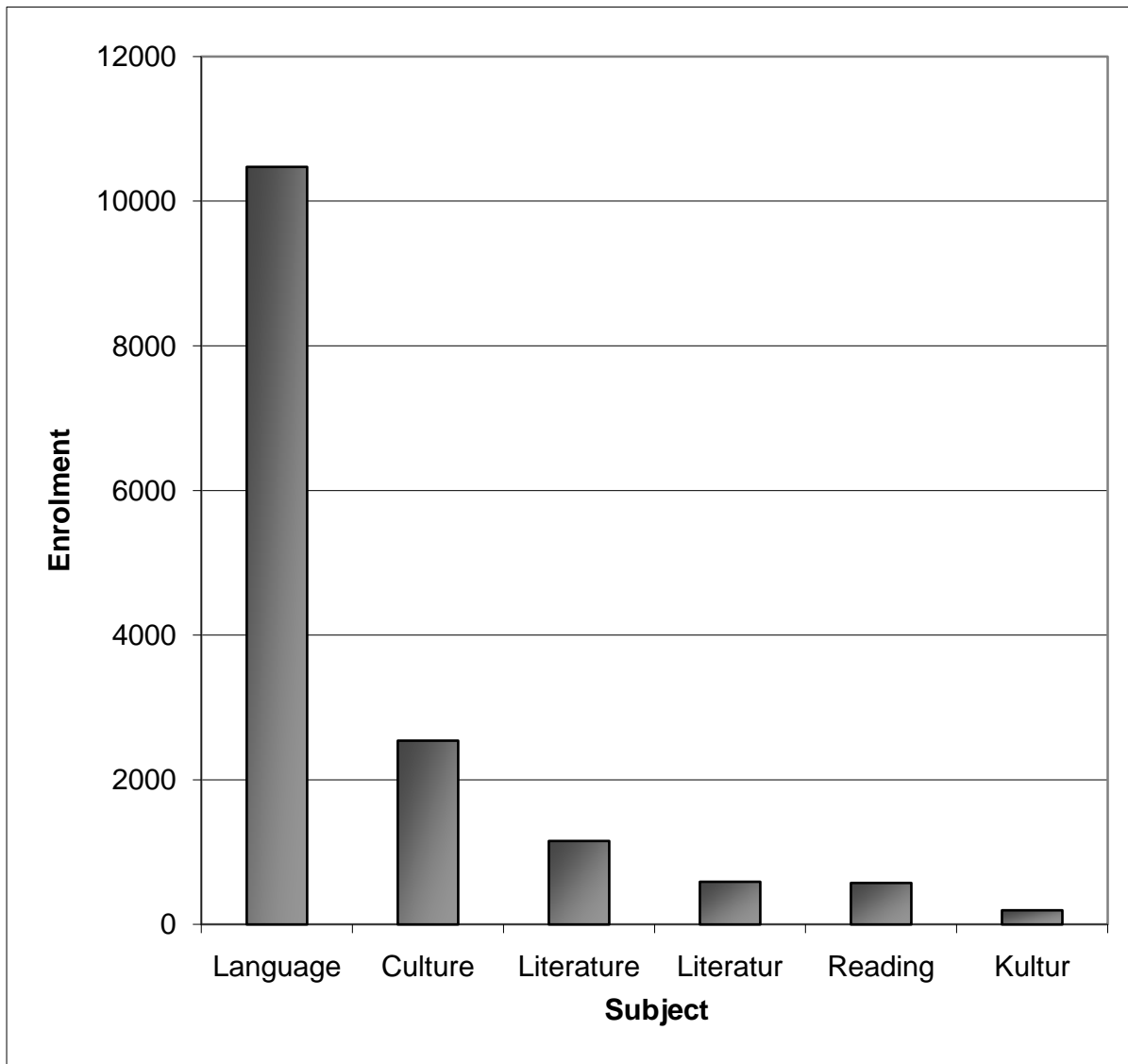


Table 18
Normal Annual Full Teaching Load For Tenured
Faculty for 29 Universities

	University	
1	Acadia	5
2	Alberta	4
3	UBC	5
4	Brock	4
5	Calgary	4
6	Concordia	4
7	Dalhousie	6
8	Guelph	5
9	Manitoba	4.5
10	McGill	4
11	McMaster	5
12	Memorial	5
13	Montreal	4
14	Mount Allison	5
15	UNB	5
16	Ottawa	5
17	UQAM	6
18	Queen's	4
19	Regina	5
20	Saint Mary's	5
21	Sask.	5
22	Simon Fr.	4
23	UTM	5
24	Trent	6
25	Victoria	5
26	Waterloo	4
27	Windsor	5
28	Winnipeg	5
29	York	5
30	<i>Average</i>	4.8

3 universities have reduced their teaching load since last year. One changed from 6 to 4, one changed from 6 to 5, and one changed from 5 to 4.

CAUTG Enrolment Survey May 2010

Table 19

Faculty Complement and Number of Courses Taught by Tenured/Tenure Stream (T / TS), Full-time Contractuals and Other Full-time Appointments (FTC / O), Per Course Instructors (Sessionals), PADs, Graduate Students, or Other Part-timers (Ses. / O) at 34 Universities

University	T / TS Faculty	Col. 1	Col. 2	Col. 3	Col. 4	Col. 5	Total Courses Taught	% Taught by T / TS (Col. 1)	% Taught by F-T (Col. 1-2)	% Taught by P-T (Col. 3-5)	% Taught by Grad. (Col. 5)
		Full-Time		Part-time							
		Courses by T / TS	Courses by FTC / O	Courses by Ses. / O	PAD	Courses by Grad.					
1 Acadia	1	6	11	4	0	0	21	29%	81%	19%	0%
2 Alberta	6	9	22	3	0	11	45	20%	69%	31%	24%
3 UBC	10	27	60	23	0	8	118	23%	74%	26%	7%
4 Brock	1	6	0	5	0	0	11	55%	55%	45%	0%
5 Calgary	4	10	4	16	0	0	30	33%	47%	53%	0%
6 Carleton	2	14	0	1	0	0	15	93%	93%	7%	0%
7 Concordia	1	2	6	14	0	0	22	9%	36%	64%	0%
8 Dalhousie	3	16	7	5	0	8	36	44%	64%	36%	22%
9 Guelph	1.5	6	5	1	2	0	14	43%	79%	21%	0%
10 Lethbridge	1	5	0	2	0	0	7	71%	71%	29%	0%
11 Manitoba	3	11	3	1	0	6	21	52%	67%	33%	29%
12 McGill	4	12	6	0	1	18	37	32%	49%	51%	49%
13 McMaster	0.75	3	7	2	0	0	12	25%	83%	17%	0%
14 Memorial	4	29	0	5	4	0	38	76%	76%	24%	0%
15 Montreal	4	9	9	1	0	2	21	43%	86%	14%	10%
16 Mt. Allison	1	6	0	9	0	0	15	40%	40%	60%	0%
17 UNB	1	2	5	5	4	0	16	13%	44%	56%	0%
18 Ottawa	2	7	0	13	0	0	20	35%	35%	65%	0%
19 PEI	0	0	0	2	0	0	2	0%	0%	100%	0%
20 Queen's	5	16	8	2	0	7	33	48%	73%	27%	21%
21 Regina	3	16	0	4	0	0	20	80%	80%	20%	0%
22 SMU	1	2	0	5	0	0	7	29%	29%	71%	0%
23 Sask.	1.5	5	0	6	0	0	11	45%	45%	55%	0%
24 Simon Fr.	2	4	5	8	0	0	17	24%	53%	47%	0%
25 Toronto	11	20	10	7	10	14	61	33%	49%	51%	23%
26 UTM	1	0	13	0	0	0	13	0%	100%	0%	0%
27 Trent	2	10	0	6	0	0	16	63%	63%	38%	0%
28 Victoria	5	12	12	4	3	0	31	39%	77%	23%	0%
29 Waterloo	8	28	0	15	0	18	61	46%	46%	54%	30%
30 W. Ontario	3	5	9	4	0	4	22	23%	64%	36%	18%
31 W. Laurier	0	0	7	0	0	0	7	0%	100%	0%	0%
32 Windsor	2.5	7	6	6	0	0	19	37%	68%	32%	0%
33 Winnipeg	1	1	8	0	0	0	9	11%	100%	0%	0%
34 York	5	13	4	10	0	0	27	48%	63%	37%	0%
Totals	101.3	319	227	189	24	96	855	37.1%	63.5%	36.5%	6.8%

63.5% of the courses were taught by full-time faculty including tenured / tenure stream, full-time contractuals and other full-time appointments, with 37.1% of the courses being taught by tenured/tenure stream. 36.5% were taught by part-timers.

Table 20
Enrolment Cap per Section for First-Year German Language Courses at 32 Universities

Simon Fr.	20
Augustana	24
Waterloo	24
York	24
Regina	28
Alberta	30
Calgary	30
Carleton	30
Manitoba	30
McGill	30
UBC	30
Winnipeg	30
Acadia	32
Athabasca	32
Dalhousie	32
Lethbridge	32
UTM	33
Brock	34
Concordia	35 *
Mt.Allison	35
Ottawa	35
Queen's	35
UNB	35
UQAM	35
Victoria	35
W.Ontario	35
Windsor	35
Memorial	40
St.Mary's	40
McMaster	50
W.Laurier	75
Guelph	120

Range	20-120
Median	32.5
Mean	36

36.41

* Cap for intensives is 25.